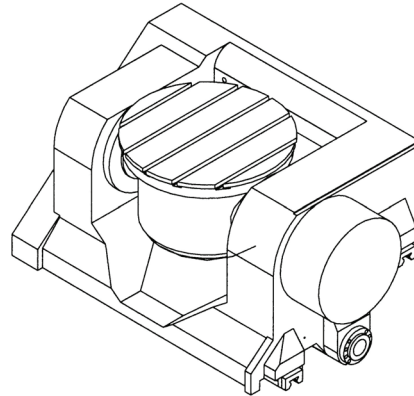


## 3/DMT-Series: 3-0606 NC Rotary & Tilting Tables



A Precision Range offering great versatility



Made In The USA

### The Rusach Advantages

#### Application

High speed capabilities in both axes with 90 rpm in the rotary axis and less than 40 rpm in the tilting axis. Enormous time reduction in machining complex parts. High accuracy achieved due to the lack of backlash.

#### Bearing

All sizes are equipped with pre-loaded axial-radial roller bearings with a high-loading capacity in both horizontal and vertical planes. This ensures sensitivity for the fine adjustment of the table platen.

#### Clamping

Distortion free active disk clamping actuated by hydraulic pressure.

#### Measuring System

RENISHAW RESR ring encoder with 1V<sub>PP</sub> output signal is typical. The encoder matches the requirement of SIEMENS and FANUC control.

#### Motors

Torque motor designed for the special requirement of the application.

#### Construction

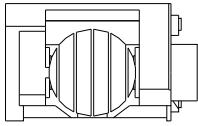
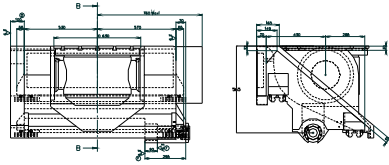
The modular construction provides the widest possible freedom for application variations.

RUSACH INTERNATIONAL



Every Challenge Has A Solution

# 3/DMT-Series: 3-0606 NC Rotary & Tilting Tables



## Available Options

- Hand scraped table top surface
- Customized table top
- Workpiece clamping system
- Prepared for pallet system
- Alternative measuring systems
- Air inlet for internal pressurization
- Various motors drives
- Prepared for linear axis (saddle)
- Hydraulic unit for the clamping system
- Other paint surface finishes
- NC systems to suit your application

## Standard Resolution

.0001 degree (others on request)

## Standard Accuracy

+/-15 arc seconds to +/-3 arc seconds.  
(Higher accuracy on request).

## Painted Surface Finish

RAL-color range in textured surface finish

For other specifications please contact our Technical department.  
(The rights for technical modifications are reserved)

## Call Rusach International

100 Raymond Street

Hope, IN 47246

Phone: 317-638-0298

[www.rusach.com](http://www.rusach.com)



Technical Data		Unit	DMT 0606
Type Designation			6
			6
Table Platen Size		mm	630
		inch	24.8
Other Executions			Pallet Receiver
T-slots	Size	mm	18
	Number		5
Dimension	L	mm	1,250
		inch	49.21
	W	mm	785
		inch	31
	H	mm	565
		inch	22.24
Center bore Ø H7	d	mm	40
		inch	1.57
Maximum standard tilt range		deg	-20/+110
Dead weight		kg	1,300
		lb	2,860
Permitted Load		kg	300
		lb	660
Nominal torque rotary axis		Nm	670
		ft lbs	486.75
Peak torque rotary axis		Nm	1,000
		ft lbs	737.5
Nominal torque tilting axis		Nm	1,500
		ft lbs	1,106
Peak torque tilting axis		Nm	3,000
		ft lbs	2,212.55
Clamping torque (Rotary)		Nm	4,000
		ft lbs	2,950
Clamping torque (Tilt)		Nm	7,000
		ft lbs	5,163
Max. speed rotary axis		rpm	90
Max. speed tilting axis		rpm	>40
Parallelism		mm	0.01
		inch	0.0004
Faceplate wobble		mm	0.005
		inch	0.0002
Runout of center bore		mm	0.005
		inch	0.00002

**Every Challenge Has A Solution**