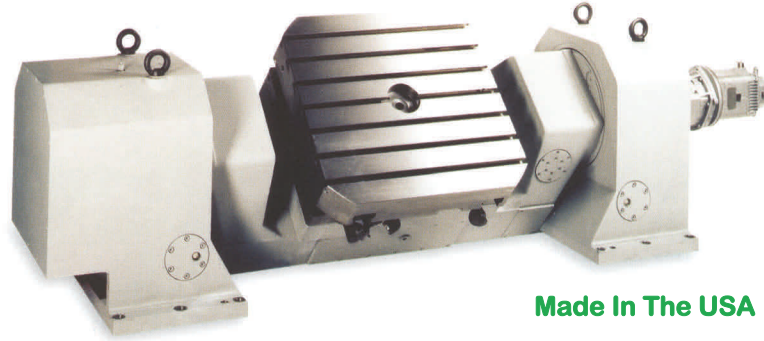


3/DS-Series: NC Rotary & Tilting Tables – Range A



A Precision Range offering great versatility



Made In The USA

(Shown with optional pallet system)

The Rusach Advantages

Application

Additional rotary and tilting axis for your machine. High accuracy and loading capacities make these tables suitable for machining and metrology applications.

Bearing

All sizes are equipped with pre-loaded axial-radial roller bearings, with a high-loading capacity in both horizontal and vertical planes. This ensures sensitivity for the fine adjustment of the table platen.

Clamping

Distortion free passive clamping by preloaded spring elements with hydraulic release.

Measuring Systems

Heidenhain ROD 250/700/800/905, RON or Rotary Inductosyn are typical.

Motors

DC and AC motors.

Construction

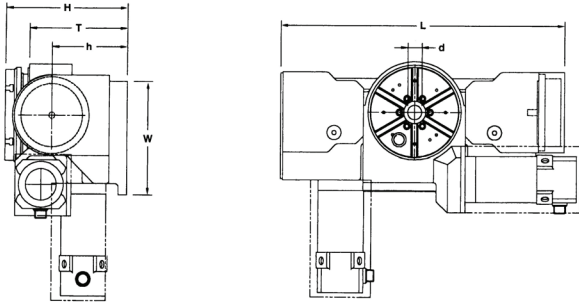
The modular construction provides the widest possible freedom for application variations.

RUSACH INTERNATIONAL



Every Challenge Has A Solution

3/DS-Series: NC Rotary & Tilting Tables – Range A



Technical Data		Unit	3-02	3-03	3-04	3-06
Type Designation			D200	D300	D450	D630
			D250	D450	D630	D800
Table Plate Size	mm		200	320	450	630
		Inches	7.87	12.59	17.71	24.80
	mm		250	450	630	800
		Inches	9.84	17.71	24.80	31.49
T-slots (DIN 650)	Size number	mm	12	14	14	18
			4	6	8	8
Length	L	mm	710	1100	1310	1565
		Inches	27.95	43.30	51.57	61.61
Width	W	mm	335	500	815	960
		Inches	13.18	19.68	32.08	37.79
Total Height	H	mm	310	495	600	715
		Inches	12.20	19.49	23.62	28.15
Dia of Center Bore	d	mm	25	40	40	50
		Inches	0.98	1.57	1.57	1.97
Tilting Axis Height	h	mm	180	320	360	385
		Inches	7.09	12.60	14.17	15.16
Table top Height(0deg)	T	mm	300	400	500	635
		Inches	11.81	15.75	19.69	25.00
Max Standard Tilt Range	deg		-20 / +110	-20 / +110	-20 / +110	-20 / +110
Weight (Approx)	kg		300	400	700	1,400
		lb	661	882	1,543	3,086
	kg		320	450	750	1,500
		lb	705	992	1,653	3,306
Permitted Load (uniform)	kg		180	315	500	800
		lb	397	694	1,102	1,763
Permitted Moment of load	Nm		100	150	250	800
		ft lbs	72	108	181	578
Clamping Torque (Rotary)	Nm		800	2,000	4,000	9,000
		ft lbs	578	1,446	2,892	6,507
Clamping Torque (Tilt)	Nm		800	2,000	8,000	18,000
		lb in	578	1,446	5,784	13,014
Total Gear Ratio (Rotary)			120:1	240:1	360:1	360:1
Total Gear Ratio (Tilt)			120:1	1200:1	1800:1	1800:1
Parallelism	mm		0.02	0.02	0.03	0.03
		inches	0.0008	0.0008	0.0012	0.0012
Face Plate Wobble	mm		0.01	0.01	0.15	0.15
		inches	0.0004	0.0004	0.0006	0.0006
Runout of Center Bore	mm		0.01	0.01	0.01	0.01
		inches	0,0004	0,0004	0,0004	0,0004

Available Options

- Hand scraped table top surface
- Customized table top
- Workpiece clamping system
- Prepared for pallet system
- Alternative measuring systems made by Heidenhain. i.e. (ROD 800 or Inductosyn)
- Air inlet for internal pressurization
- Various motors and intermediate gear boxes
- Prepared for linear axis (saddle)
- Hydraulic unit for the clamping system
- Other paint surface finishes
- NC systems to suit your application

Standard Resolution

.0001 degree (others on request)

Standard Accuracy

+/- 15 arc seconds to +/- 3 arc seconds. (Higher on request)

Painted Surface Finish

RAL-color range in textured surface finish

For other specifications please contact our Technical department. (The rights for technical modifications are reserved).

Call Rusach International

100 Raymond Street

Hope, IN 47246

Phone: 317-638-0298

www.rusach.com



Every Challenge Has A Solution