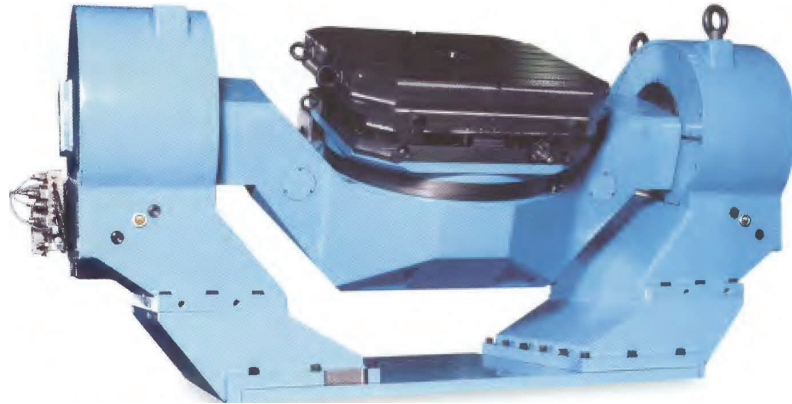


3/DS-Series: NC Rotary & Tilting Tables-Range B



A Precision Range offering great versatility



Made In The USA

The Rusach Advantages

Application

An additional rotary and tilting axis for your machine in the size range 800mm to 2000mm diameter. With high accuracy and high loading capacities, the tables are suitable for heavy machining and metrology applications.

Bearing

Preloaded axial-radial roller bearings are incorporated, to provide high rigidity in both planes. Sensitivity and fine positioning are ensured.

Clamping

Distortion free passive clamping by preloaded spring elements and hydraulic release.

Measuring Systems

High precision Heidenhain angular encoders and rotary inductosyns are standard.

Motors

DC and AC motors.

Construction

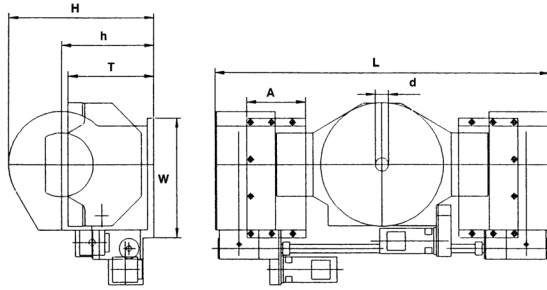
The modular design provides freedom to match application requirements. The tilt axis is driven on both sides which are linked by one shaft to ensure rigidity and synchronous motion.

RUSACH INTERNATIONAL



Every Challenge Has A Solution

3/DS-Series: NC Rotary & Tilting Tables—Range B



Technical Data		Unit	3/DS-0808	3/DS-1010	3/DS-1212	3/DS-1616
Type Designation			D800	D1000	D1250	D1600
			D1000	D1250	D1600	D2000
Table Plate Size	mm	800	1000	1250	1600	
	Inches	31.50	39.37	49.21	62.99	
	mm	1000	1250	1600	2000	
	Inches	39.37	49.21	62.99	78.74	
T-slots (DIN 650)	Size number	mm	18	18	22	22
			8	8	8	8
Dimension	L	mm	2540	2840	3500	4100
		Inches	100.00	111.81	137.79	161.42
	w	mm	900	900	1400	1700
		Inches	35.43	35.43	55.15	66.93
	H	mm	1100	1100	1400	1800
		Inches	43.31	43.31	55.12	70.87
	Tilting Axis Height	mm	700	700	1200	1200
		Inches	27.56	27.56	47.24	47.24
Table Top Height(0deg)	mm	620	620	1150	1150	
	Inches	24.41	24.41	45.28	45.28	
Length of Clamping Ledge	mm	450	450	700	700	
	Inches	17.72	17.72	27.56	27.56	
Center Bore	mm	100	100	100	100	
	Inches	3.94	3.94	3.94	3.94	
Weight (Approx)	kg	7,000	8,000	15,000	20,000	
		15,400	17,600	33,000	44,000	
	lb	7,500	8,500	16,000	21,000	
		16,500	18,700	35,200	46,200	
Loading Capacity (uniform)	kg	2,500	3,000	4,000	5,500	
	lb	5,500	6,600	8,800	12,100	
Permitted Machining Force	N	25,000	25,000	50,000	75,000	
	lbs	5,500	5,500	11,000	16,500	
Rotary Axis	Nm	16,000	16,000	25,000	35,000	
Clamping torque (Std)	ft lbs	138,583	138,583	216,535	303,150	
Tilting Axis	Nm	24,000	24,000	32,000	40,000	
Clamping torque (Std)	lb in	207,874	207,874	277,165	346,456	
Maximum Load Moment	Nm	20,000	35,000	40,000	50,000	
	lb in	173,228	303,150	346,457	433,070	
Rotary Axis	Nm	11,000	11,000	19,000	27,000	
Max. Milling torque	lb in	95,276	95,276	164,567	233,858	
Tilting Axis	Nm	30,000	35,000	40,000	50,000	
Max. Milling torque	lb in	259,842	301,500	346,457	433,070	
Rotary Axis Main gear Ratio		360:1	360:1	360:1	360:1	
Tilting Axis Main Gear Ratio		4680:1	4680:1	4680:1	4680:1	
Parallelism	mm	0.030	0.030	0.040	0.040	
	inches	0.0012	0.0012	0.0016	0.0016	
Face Plate Runout (0.9 x D max)	mm	0.020	0.020	0.020	0.030	
	inches	0.0008	0.0008	0.0008	0.0012	
Runout of Center Bore	mm	0.010	0.010	0.010	0.010	
	inches	0.0004	0.0004	0.0004	0.0004	

Available Options

- Hand scraped table top surface
- Customized table top
- Workpiece clamping system
- Prepared for pallet system
- Alternative measuring systems made by Heidenhain. i.e. (ROD 800 or Inductosyn)
- Air inlet for internal pressurization
- Various motors and intermediate gear boxes
- Prepared for linear axis (saddle)
- Hydraulic unit for the clamping system
- Other paint surface finishes
- NC systems to suit your application

Standard Resolution

.0001 degree (others on request)

Standard Accuracy

+/- 15 arc seconds to +/- 3 arc seconds. (Higher on request)

Clamp Release Pressure

90 bar or 1300 psi

Painted Surface Finish

RAL-color range in textured surface finish

For other specifications please contact our Technical department. (The rights for technical modifications are reserved)

Call Rusach International

100 Raymond Street

Hope, IN 47246

Phone: 317-638-0298

www.rusach.com



Every Challenge Has A Solution