

5-Series: Vertical NC Rotary Tables—Range A



A Precision Range offering great versatility



Made In The USA

The Rusach Advantages

Application

For situations that require table sizes between 200mm and 800mm diameter in the vertical position. With high accuracy and high loading capacities, they are suitable for heavy machining and metrology applications.

Bearing

Preloaded axial-radial roller bearings are incorporated, to provide high rigidity in both planes. Sensitivity and fine positioning are ensured.

Clamping

Distortion free passive clamping by preloaded spring elements and hydraulic release.

Measuring Systems

High precision Heidenhain angular encoders and rotary inductosyns are standard.

Motors

DC and AC motors.

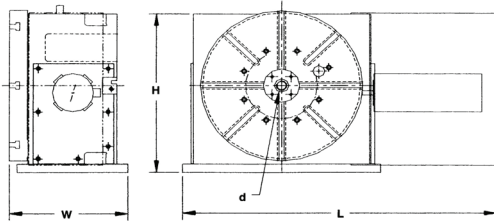
Construction

The modular design permits freedom to match application requirements. The worm gear drive is specially configured for maximum torque and minimum (adjustable) backlash.



Every Challenge Has A Solution

5-Series: Vertical NC Rotary Tables—Range A



Technical Data		Unit	5-02	5-03	5-04	5-06	
Type			D200	D320	D450	D630	
			D250	D450	D630	D800	
			D320				
Table Size	Dia.	mm	200	320	450	630	
		Inches	7.87	12.60	17.72	24.80	
		mm	250	450	630	800	
		Inches	9.84	17.72	24.80	31.50	
		mm	320				
		Inches	12.60				
T-slots (DIN)	Size number	mm	12	14	14	18	
			4	6	8	8	
Dimension	L	mm	530	640	850	1000	
		Inches	20.87	25.20	33.46	39.37	
	W	mm	180	200	305	325	
		Inches	7.09	7.87	12.08	12.79	
	H	mm	305	345	500	750	
		Inches	12.01	13.58	19.68	29.53	
		mm	305	425	590	800	
		Inches	12.01	16.73	23.23	31.50	
		mm	340				
		Inches	13.39				
	Center Hole	d	mm	25	40	40	50
			Inches	0.98	1.57	1.57	1.97
Weight (Approx)		kg	90	120	200	400	
		lb	198	264	440	880	
		kg	110	190	310	530	
		lb	242	418	682	1166	
		kg	120				
		lb	264				
Uniform Loading	kg	180	400	1,000	1,600		
	lb	396	880	2,200	3,520		
Permitted Machining Force	N	10,000	20,000	25,000	30,000		
	lb	2,200	4,400	5,500	6,600		
Clamping Force	Nm	800	2,000	4,000	6,000		
	lb in	6,929	17,322	34,650	51,970		
Milling Torque	Nm	700	700	4000	5500		
	lb in	6,063	6,063	32,650	47,640		
Main Gear Ratio (standard)		120:1	180:1	180:1	180:1		
Face Plate Runout	mm	0,005	0,010	0,010	0,010		
	inches	0,0002	0,0004	0,0004	0,0004		
Runout of Center Bore	mm	0,010	0,010	0,010	0,010		
	inches	0,0004	0,0004	0,0004	0,0004		
Squareness of Table to Base	mm/300mm	0.010	0.010	0.010	0.010		
	inches/12 inches	0.0004	0.0004	0.0004	0.0004		

Available Options

- Hand scraped table top surface
- Customized table top
- Workpiece clamping system
- Alternative measuring systems made by Heidenhain. i.e. (ROD 800 or Inductosyn)
- A horizontal and vertical version can be supplied. (Dual purpose)
- Air inlet for internal pressurization
- Various motors and intermediate gear boxes
- Prepared for linear axis (saddle)
- Hydraulic unit for the clamping system
- Other paint surface finishes
- NC systems to suit your application

Standard Resolution

.0001 degree (others on request)

Standard Accuracy

Total dividing accuracy 3 arc seconds. (Higher on request).

Painted Surface Finish

RAL-color range in textured surface finish

For other specifications please contact our Technical department.
The rights for technical modifications are reserved)

Call Rusach International

100 Raymond Street

Hope, IN 47246

Phone: 317-638-0298

www.rusach.com



Every Challenge Has A Solution