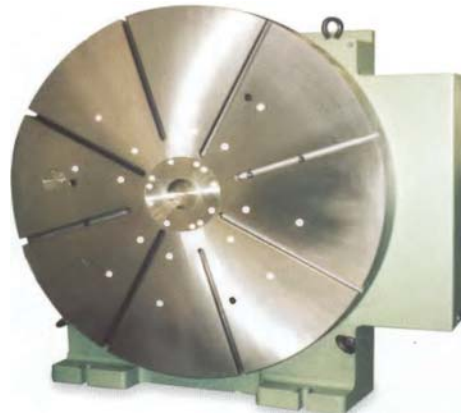




Rusach International 5-Series: Vertical NC Rotary Tables - Range B 800mm thru 2,000mm



Made in the USA

The Rusach Advantages

Application

For situations that require table sizes between 800mm and 2,000mm diameter in the vertical position. Suitable for heavy machining and metrology applications, with high accuracies and heavy load capabilities. Larger diameters designed upon request.

Bearing

Preloaded axial-radial roller bearings incorporated providing high rigidity in both planes. Sensitivity and fine positioning ensured.

Clamping

Distortion free passive clamping by preloaded spring elements and hydraulic release.

Measuring Systems

Standard mechanical accuracy of +/- 15.0 Arc Seconds. High precision Heidenhain encoders are offered for increased accuracies to +/-1.0 arc seconds.

Motors

DC and AC servomotors.

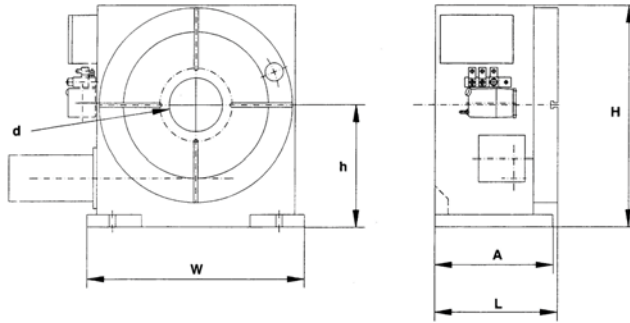
Construction

Modular design permits freedom to match application requirements. Worm gear drive specially configured for maximum torque and minimum (adjustable) backlash.



Every Challenge Has A Solution

5-Series: Vertical NC Rotary Tables—Range B



Reference dimensions only. Approval prints are supplied on all tables.

Technical Data		Unit	5-08	5-10	5-12	5-16
Type Designation			D800	D1000	D1250	D1600
			D1000	D1250	D1600	D2000
Table Diameter	Round	mm	800	1000	1250	1600
		Inches	31.50	39.37	49.21	62.99
		mm	1000	1250	1600	2000
		Inches	39.37	49.21	62.99	78.74
T-slots (Din 650)	Size number	mm	18	18	22	22
			8	8	8	8
Dimension	L	mm	500	610	810	1000
		Inches	19.86	24.02	31.89	39.37
	W	mm	820	1010	1250	1600
		Inches	32.28	39.76	49.21	62.99
	H	mm	860	1055	1300	1650
Inches		33.86	41.54	51.18	64.96	
A	mm	1050	1300	1650	2050	
	Inches	43.31	52.16	66.93	82.68	
Centre Hole	d	mm	100	100	100	100
		Inches	3.94	3.94	3.94	3.94
Centerline of Table	h	mm	450	550	675	850
		Inches	17.72	21.65	26.57	33.46
		mm	550	675	850	1050
		Inches	21.65	26.57	33.46	41.34
Weight (Approx) w/o motor		kg	1,000	1,550	3,500	7,000
		lb	2,200	3,410	7,700	15,400
		kg	1,600	2,800	4,500	8,500
		lb	3,520	6,160	9,900	18,700
Loading Capacity (uniform)		kg	2,500	6,000	9,000	15,000
		lb	5,500	13,200	19,800	33,000
Permitted Machining Force		N	63,000	80,000	100,000	150,000
		lb	13,860	17,600	22,000	33,000
Clamping Torque (standard)		Nm	17,000	22,000	30,000	65,000
		lb in	147,244	190,550	259,840	562,992
Max. Milling Torque		Nm	11,000	19,000	27,000	60,000
		lb in	95,275	164,567	233,858	519,685
Main Gear Ratio (standard)			360:1	360:1	360:1	360:1
Face Plate Runout (0.9 x D Max)		mm	0,015	0,015	0,020	0,020
		inches	0,0006	0,0006	0,0008	0,0008
Runout of Centre Bore		mm	0,010	0,010	0,010	0,010
		inches	0,0004	0,0004	0,0004	0,0004
Squareness of Table to Base		mm/300mm	0.01	0.01	0.01	0.01
		in/12 inches	0.0004	0.0004	0.0004	0.0004

Available Options

- Hand Scraped Table Top Surface
- Customized Table Top
- Workpiece Clamping System
- A Horizontal and Vertical Version can be Supplied. (Convertible)
- Air Inlet for Internal Pressurization
- Various Motors and Intermediate Gear Boxes
- Prepared for Linear Axis (Saddle)
- Hydraulic Unit for the Clamping System
- Other Paint Surface Finishes
- NC Systems to Suit Your Application
- Tail Stock Assemblies
- Part Supports
- Larger Diameters Engineered on Request

Standard Resolution

.0001 degree (others on request)

Standard Accuracy

+/- 15 arc seconds. Higher accuracy on request.

Clamp Release Pressure

90 bar or 300 psi

Painted Surface Finish

RAL-color range in textured surface finish

For other specifications please contact our Technical department.

The rights for technical modifications are reserved.

Call Rusach International

100 Raymond Street

Hope, IN 47246

Phone: 317-638-0298

www.rusach.com



Every Challenge Has A Solution