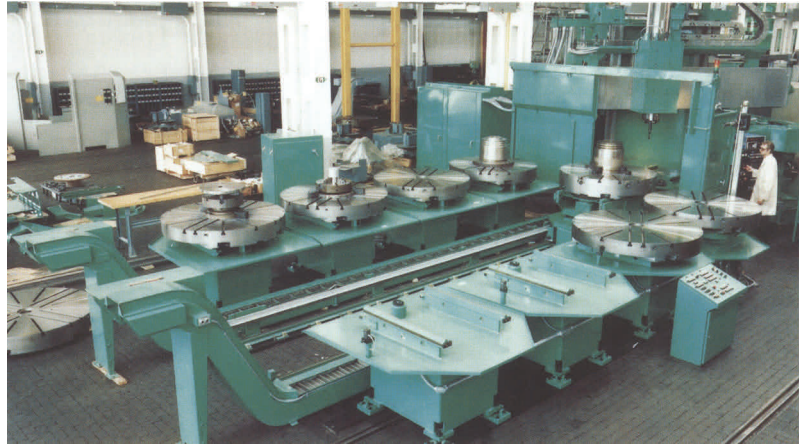


8-Series: Pallet Changers & FMS

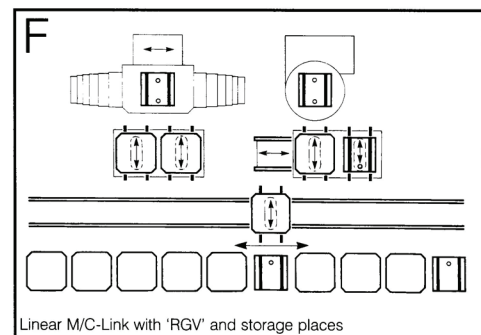
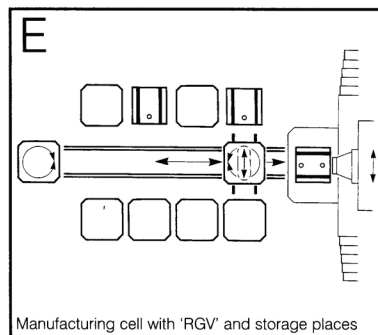
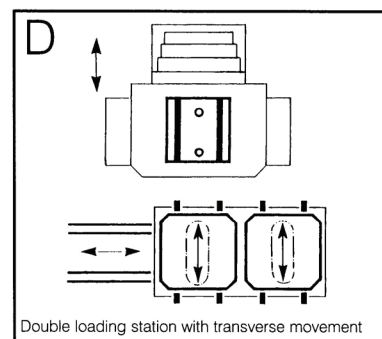
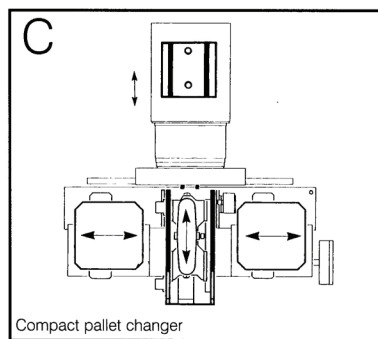
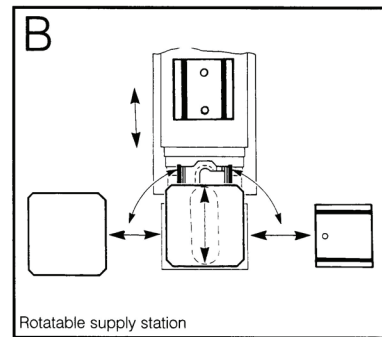
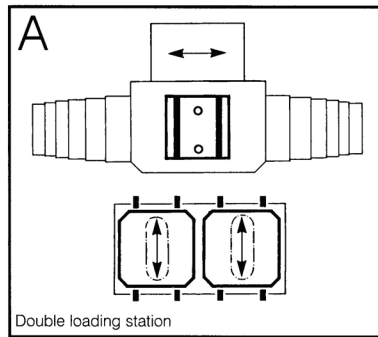


A complete range of automation components for dual shuttle systems or FMS type installations



Made In The USA

Typical Configurations



Every Challenge Has A Solution

8-Series: Pallet Changers & FMS



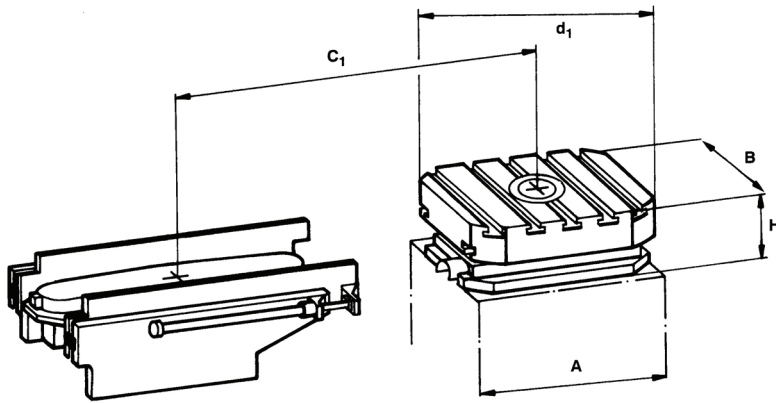
Call Rusach International

100 Raymond Street

Hope, IN 47246

Phone: 317-638-0298

www.rusach.com



Technical Data		Units	8-06	8-08	8-10	8-12	8-16	8-20
Type Designation	AxB		630x630	800x800	1000x1000	1250x1250	1600x1600	2000x2000
			D800	D1000	D1250	D1600	D2000	D2500
			630x800	800x1000	1000x1250	1250x1600	1600x2000	2000x2500
Pallet Dimension DIN 55201 Form B	mm		630x630	800x800	1000x1000	1250x1250	1600x1600	2000x2000
		<i>inches</i>	24.80x24.80	31.50x31.50	39.37x39.37	49.21x49.21	62.99x62.99	78.74x78.74
	mm		800	1000	1250	1600	2000	2500
		<i>inches</i>	31.50	39.37	49.21	62.99	78.74	98.42
	mm		630x800	800x1000	1000x1250	1250x1600	1600x2000	2000x2500
		<i>inches</i>	24.80x31.50	31.50x39.37	39.37x49.21	49.21x62.99	62.99x78.74	78.74x98.42
T-Slots (DIN 650)	Size		18	22	22	22	22	22
	Number		5	7	9	11	13	15
Rounded Corners	d ₁	mm	1,000	1,250	1,600	2,000	2,500	3,200
		<i>inches</i>	39.37	49.21	62.99	78.74	94.43	125.98
Total Height	mm		240	260	300	340	375	420
		<i>inches</i>	9.45	10.24	11.81	13.39	14.76	16.53
	H	mm	250	270	310	350	390	435
		<i>inches</i>	9.84	10.63	12.2	13.78	15.35	17.13
	mm		250	270	310	350	390	435
		<i>inches</i>	9.84	10.63	12.20	13.78	15.35	17.13
Max Pallet Stroke	C ₁	mm	1,593	1,772	2,226	2,479	3,107	3,489
		<i>inches</i>	62.83	69.76	87.64	97.60	122.32	137.36
Clamping Station Weight	kg		160	300	520	760	1,150	2,200
	<i>lb</i>		352	660	1,144	1,672	2,530	4,840
Pallet Weight	kg		250	460	1,100	2,050	3,850	6,650
		<i>lb</i>	550	1,012	2,420	4,510	8,470	14,630
	kg		200	360	890	1,650	3,050	5,250
		<i>lb</i>	440	792	1,958	3,630	6,710	11,550
	kg		300	600	1,190	2,550	4,650	9,500
		<i>lb</i>	660	1,320	2,618	5,610	10,230	20,900
Loading (uniform)	kg		1,000	1,600	2,500	4,000	6,500	10,000
	<i>lb</i>		2,200	3,520	5,500	8,800	14,300	22,000
Vertical Machining Force	N		25,000	32,000	40,000	63,000	100,000	100,000
	<i>lb</i>		5,500	7,040	8,800	13,860	22,000	22,000
Moment of Load	Nm		25,000	40,000	50,000	60,000	80,000	100,000
	<i>Lb ft</i>		18,044	28,871	36,090	43,307	57,743	72,178
Clamping Force (Standard)	N		180,000	240,000	300,000	360,000	480,000	600,000
	<i>lb</i>		39,600	52,000	66,000	79,200	105,600	132,000
Machining Torque	Nm		25,000	40,000	50,000	60,000	80,000	100,000
	<i>Lb ft</i>		18,044	28,871	36,090	43,307	57,743	72,178
Parallelism	mm		0.030	0.030	0.030	0.040	0.040	0.040
	<i>inches</i>		0.0012	0.0012	0.0012	0.0016	0.0016	0.0016
Repeatability	mm		0.020	0.020	0.025	0.025	0.030	0.030
	<i>inches</i>		0.0008	0.0008	0.0010	0.0010	0.0012	0.0012

For other specifications please contact our technical department. (The rights for technical modifications are reserved).

Every Challenge Has A Solution