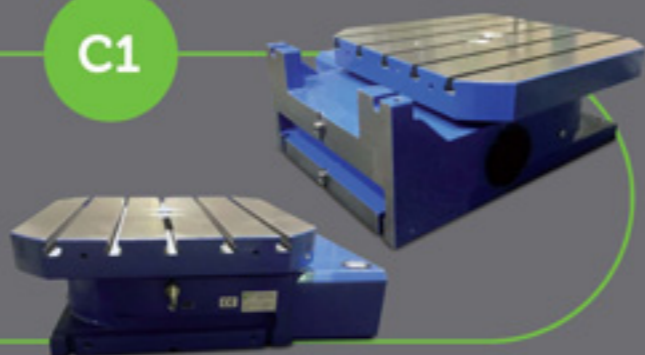




PRECISE & FLEXIBLE

Table top	660 - 1.000
Work position	V - H - HV
Center Height	410 - 600

C1

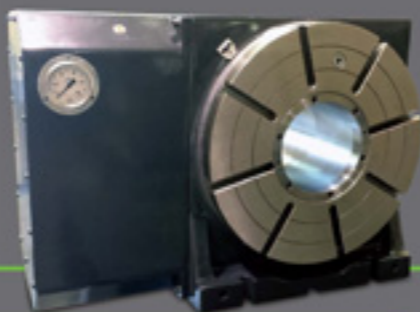


TB



THROUGH BORE

Table top	400 - 1.250
Work position	H - HV
Center Height	260 - 750



TWO AXIS - TILTING

Table top	125 - 1.000
Work position	-
Center Height	150 - 410



TT



MS



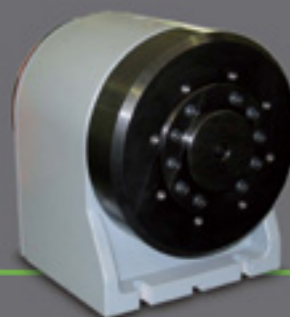
MULTI SPIDLE

Table top	100 - 150
Work position	V - H - HV
Center Height	125 - 150



DIRECT DRIVE

Table top	125 - 1.600
Work position	V - H - HV
Center Height	-

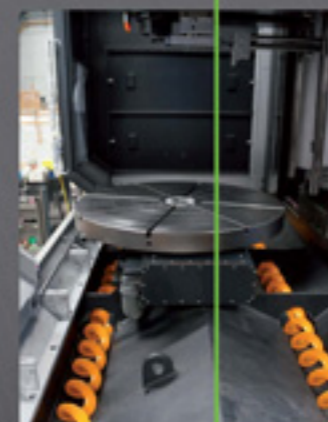
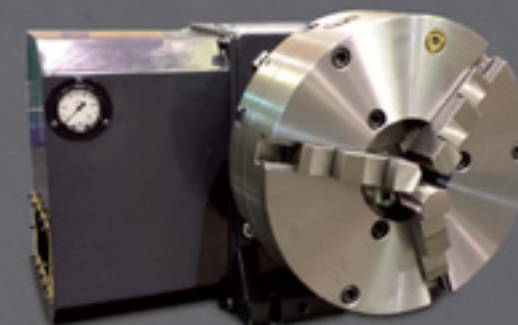
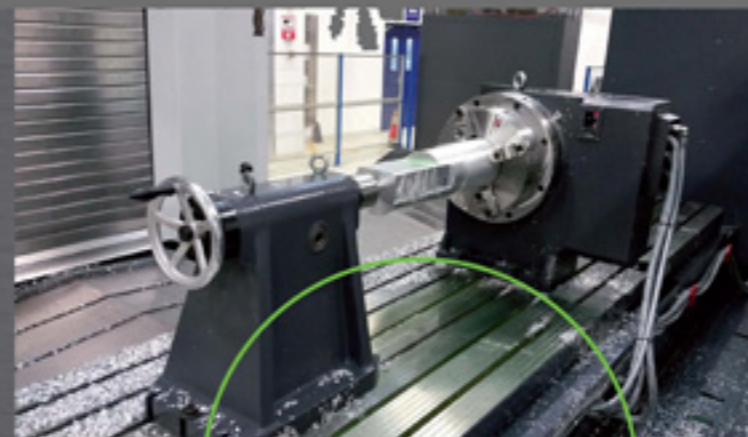


TM



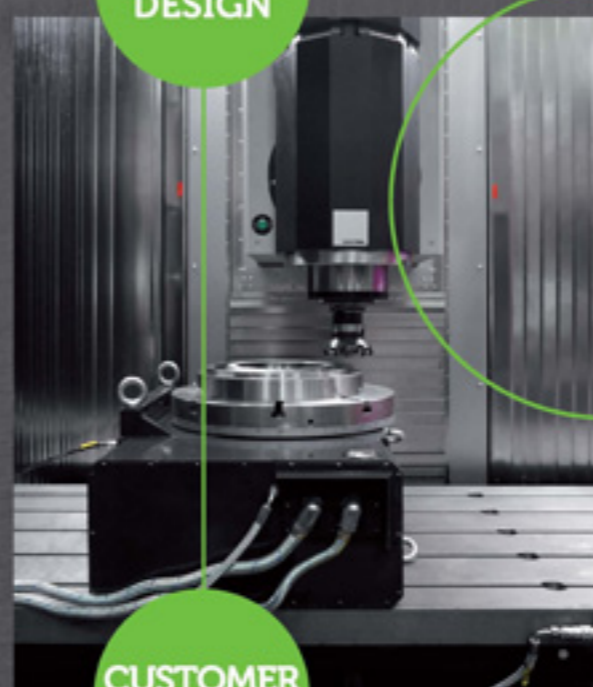
Rusach International
100 Raymond Street
Hope, Indiana 47246
www.rusach.com

IRTS, 2015. Las especificaciones están sujetas a cambios sin previo aviso /



CUSTOM DESIGN

WIDE RANGE



CUSTOMER SERVICE

HIGH PERFORMANCE NC ROTARY TABLES



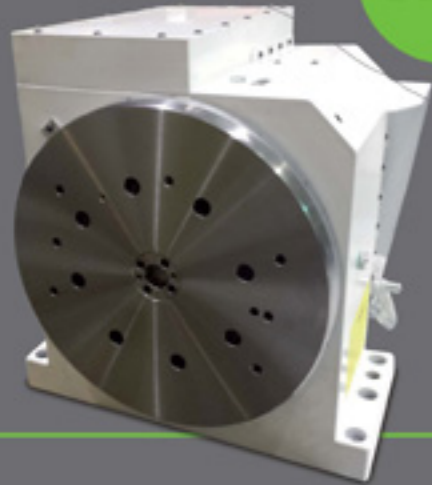
IRTS

Innovative Rotary Table Solutions, S.L.



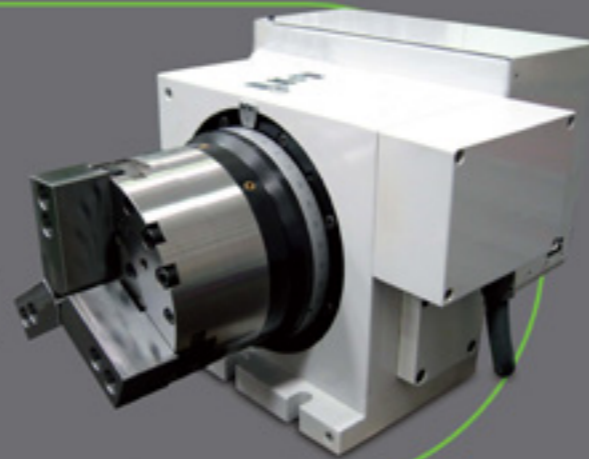
ROTARY TABLE PRODUCTION RANGE

CNC

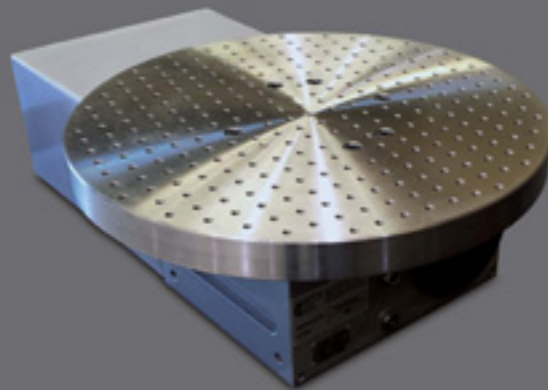


COMPACT ROTARY TABLE

∅ Table top	125 - 350
Work position	H
Center Height	140 - 210

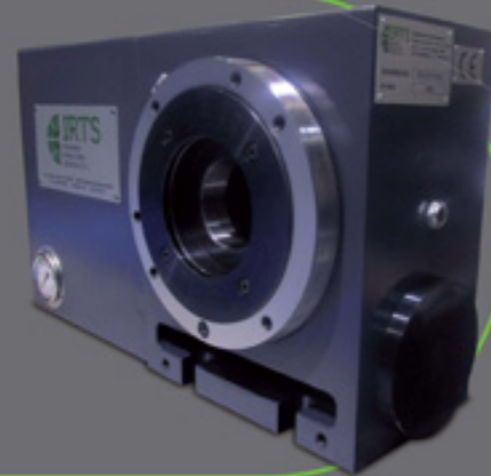


CNC



COMPACT ROTARY TABLE

∅ Table top	125 - 350
Work position	H - HV
Center Height	140 - 210

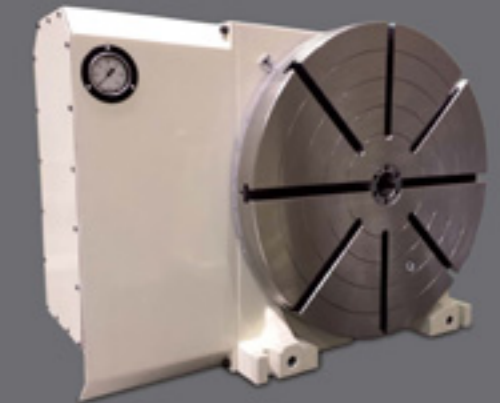
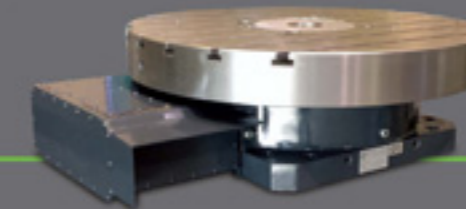


B1



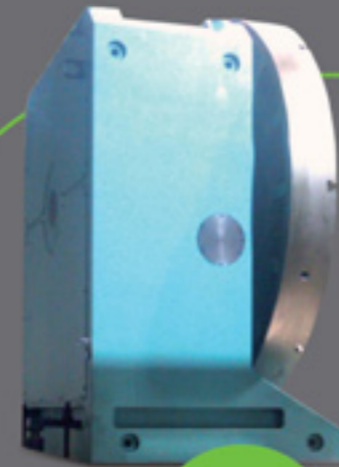
MEDIUM RANGE ROTARY TABLE

∅ Table top	500 - 800
Work position	V - H - HV
Center Height	335

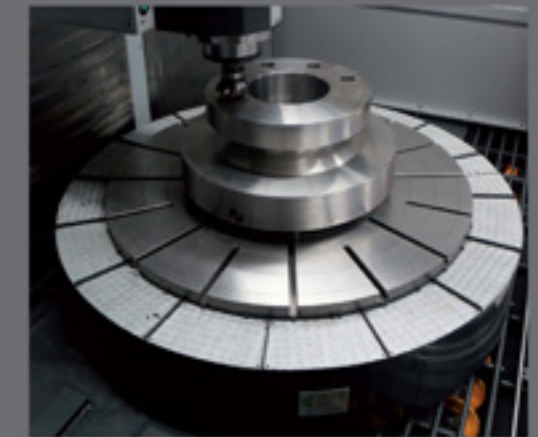
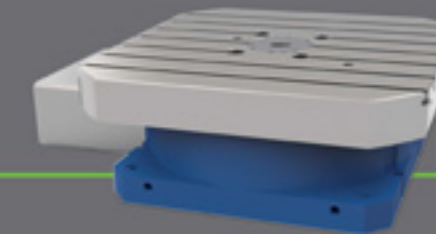


RIGID & FLEXIBLE

∅ Table top	1.000 - 1.500
Work position	V - H - HV
Center Height	600 - 875



D1

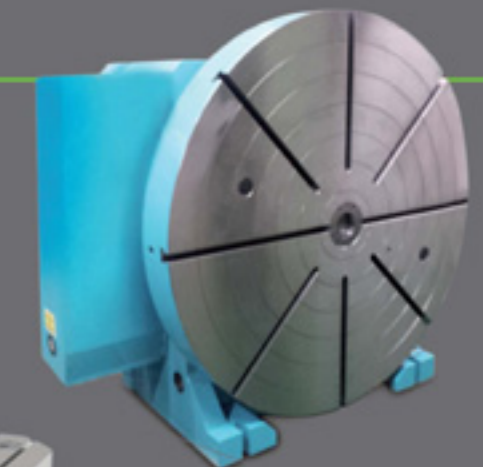
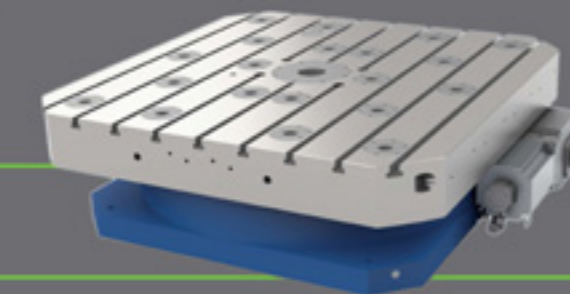


HIGH LOAD CAPACITY

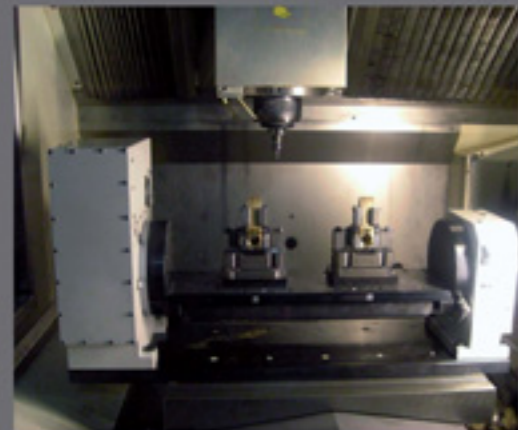
∅ Table top	1.500 - 2.000
Work position	V - H - HV
Center Height	850 - 1.200



X1



A1



SMALL SIZE ROTARY TABLE

∅ Table top	400 - 450
Work position	V - H - HV
Center Height	260

