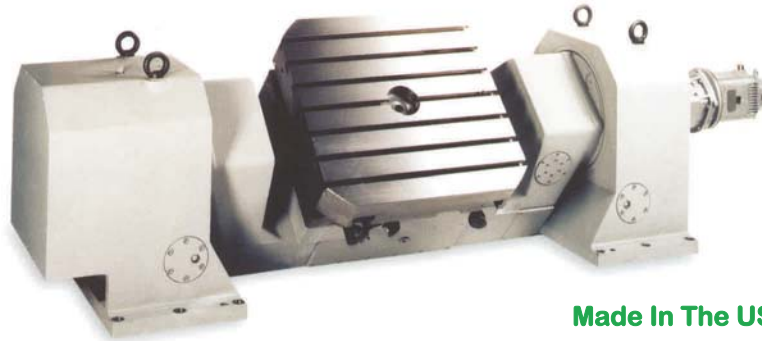




Rusach International 3DS-Series: NC Rotary & Tilting Tables – Range A 200mm thru 800mm



Made In The USA

(Shown with optional pallet system)

The Rusach Advantages

Application

Additional rotary and tilting axis for your machine. High accuracy and loading capacities make these tables suitable for machining and metrology applications. Ideal for small to mid sized milling machines, vertical machines and horizontal machines. Special design series, shorter OAL, lower height and shorter width than our standard 3-Series.

Bearing

Preloaded axial-radial roller bearings incorporated to provide high rigidity in both planes. Sensitivity and fine positioning are ensured.

Clamping

Distortion free passive clamping by preloaded spring elements with hydraulic release.

Measuring Systems

Standard mechanical accuracy of +/- 15.0 Arc Seconds. High precision Heidenhain encoders are offered for increased accuracies to +/-1.0 arc seconds.

Motors

DC and AC servo motors.

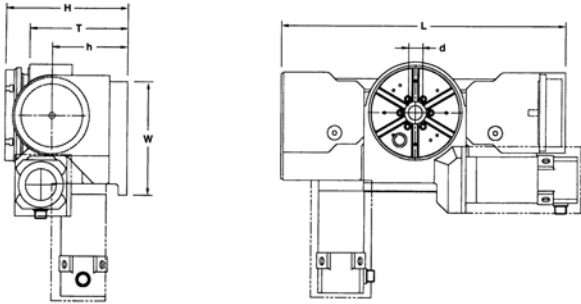
Construction

Modular design permits freedom to match application requirements. Worm gear drive specially configured for maximum torque and minimum (adjustable) backlash.



Every Challenge Has A Solution

3DS-Series: NC Rotary & Tilting Tables – Range A



Technical Data		Unit	3DS-0202	3DS-0303	3DS-0404	3DS-0606
Type Designation			D200	D300	D450	D630
			D250	D450	D630	D800
Table Size	Round	mm	200	320	450	630
		Inches	7.87	12.59	17.71	24.80
		mm	250	450	630	800
		Inches	9.84	17.71	24.80	31.49
T-slots (DIN 650)	Size number	mm	12	14	14	18
			4	6	8	8
Dimensions	L	mm	710	1100	1310	1565
		Inches	27.95	43.30	51.57	61.61
	W	mm	335	500	815	960
		Inches	13.18	19.68	32.08	37.79
	H	mm	310	495	600	715
		Inches	12.20	19.49	23.62	28.15
Center Bore	d	mm	25	40	40	50
		Inches	0.98	1.57	1.57	1.97
Tilting Axis Height	h	mm	180	320	360	385
		Inches	7.09	12.60	14.17	15.16
Table top Height (0deg)	T	mm	300	400	500	635
		Inches	11.81	15.75	19.69	25.00
Max Standard Tilt		deg	-20 / +110	-20 / +110	-20 / +110	-20 / +110
Weight (Approx) w/o motors	kg		300	400	700	1,400
		lb	661	882	1,543	3,086
	kg		320	450	750	1,500
		lb	705	992	1,653	3,306
Permitted Load (uniform)	kg		180	315	500	800
	lb		397	694	1,102	1,763
Permitted Moment of load	Nm		100	150	250	800
	ft lbs		72	108	181	578
Clamping Torque (Rotary)	Nm		800	2,000	4,000	9,000
	ft lbs		578	1,446	2,892	6,507
Clamping Torque (Tilt)	Nm		800	2,000	8,000	18,000
	lb in		578	1,446	5,784	13,014
Total Gear Ratio (Rotary)			120:1	240:1	360:1	360:1
Total Gear Ratio (Tilt)			120:1	1200:1	1800:1	1800:1
Parallelism	mm		.020	.020	.030	.030
	inches		.0008	.0008	.0012	.0012
Face Plate Wobble	mm		.010	.010	.150	.150
	inches		.0004	.0004	.0006	.0006
Runout of Center Bore	mm		.010	.010	.010	.010
	inches		.0004	.0004	.0004	.0004

Available Options

- Hand Scraped Table Top Surface
- Customized Table Top
- Workpiece Clamping System
- Prepared for Pallet System
- Alternative Measuring Systems made by Heidenhain. i.e. (ROD 800 or Inductosyn)
- Air Inlet for Internal Pressurization
- Various Motors and Intermediate Gear Boxes
- Prepared for Linear Axis (Saddle)
- Hydraulic Unit for the Clamping System
- Other Paint Surface Finishes
- NC Systems to Suit Your Application

Standard Resolution

.0001 degree (others on request)

Standard Accuracy

+/- 15 arc seconds to +/- 3 arc seconds. (Higher on request)

Painted Surface Finish

RAL-color range in textured surface finish

Clamp Release Pressure

90 bar or 300 psi

For other specifications please contact our Technical department. The rights for technical modifications are reserved.

Reference dimensions only. Approval prints are supplied on all tables.

Call Rusach International

100 Raymond Street

Hope, IN 47246

Phone: 317-638-0298

www.rusach.com



Every Challenge Has A Solution