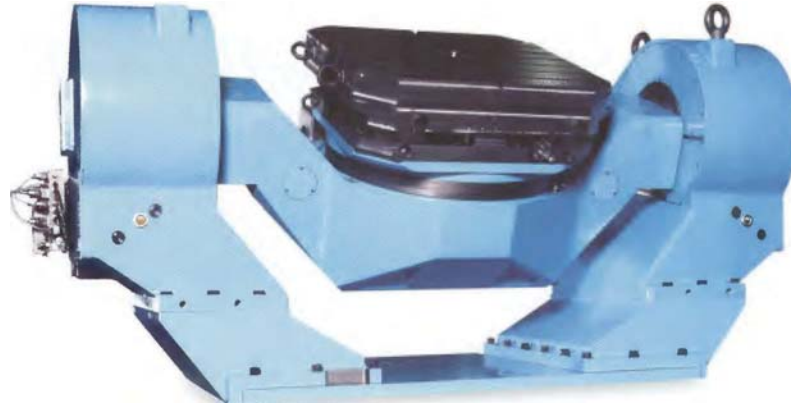




Rusach International 3DS-Series: NC Rotary & Tilting Tables-Range B 800mm to 2,000mm



Made In The USA

The Rusach Advantages

Application

Additional rotary and tilting axis for your machine. High accuracy and high loading capacities make these tables suitable for heavy machining and metrology applications. Special design series, shorter OAL, lower height and shorter width over our standard 3-Series.

Bearing

Preloaded axial-radial roller bearings incorporated to provide high rigidity in both planes. Sensitivity and fine positioning ensured.

Clamping

Distortion free passive clamping by preloaded spring elements and hydraulic release.

Measuring Systems

Standard mechanical accuracy of +/- 15.0 Arc Seconds. High precision Heidenhain encoders are offered for increased accuracies to +/-1.0 arc seconds.

Motors

DC and AC servo motors.

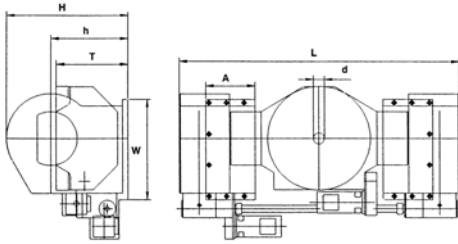
Construction

Modular design provides freedom to match application requirements.



Every Challenge Has A Solution

3DS-Series: NC Rotary & Tilting Tables—Range B



Technical Data		Unit	3DS-0808	3DS-1010	3DS-1212	3DS-1616	
Type Designation			D800	D1000	D1250	D1600	
			D1000	D1250	D1600	D2000	
Table Size	Rnd	mm	800	1000	1250	1600	
		Inches	31.50	39.37	49.21	62.99	
	mm	1000	1250	1600	2000		
	Inches	39.37	49.21	62.99	78.74		
T-slots (DIN 650)	Size number	mm	18	18	22	22	
			8	8	8	8	
Dimension	L	mm	2540	2840	3500	4100	
		Inches	100.00	111.81	137.79	161.42	
	W	mm	900	900	1400	1700	
		Inches	35.43	35.43	55.15	66.93	
	H	mm	1100	1100	1400	1800	
		Inches	43.31	43.31	55.12	70.87	
			mm	1100	1100	1400	1800
			Inches	43.31	43.31	55.12	70.87
Tilting Axis Height	h	mm	700	700	1200	1200	
		Inches	27.56	27.56	47.24	47.24	
Table Top Height(0deg)	T	mm	620	620	1150	1150	
		Inches	24.41	24.41	45.28	45.28	
Length of Clamping Ledge		mm	450	450	700	700	
		Inches	17.72	17.72	27.56	27.56	
Center Bore	d	mm	100	100	100	100	
		Inches	3.94	3.94	3.94	3.94	
Weight (Approx) w/o motors		kg	7,000	8,000	15,000	20,000	
		lb	15,400	17,600	33,000	44,000	
	kg	7,500	8,500	16,000	21,000		
	lb	16,500	18,700	35,200	46,200		
Loading Capacity (uniform)		kg	2,500	3,000	4,000	5,500	
		lb	5,500	6,600	8,800	12,100	
Permitted Machining Force		N	25,000	25,000	50,000	75,000	
		lbs	5,500	5,500	11,000	16,500	
Rotary Axis		Nm	16,000	16,000	25,000	35,000	
Clamping torque (Std)		ft lbs	138,583	138,583	216,535	303,150	
Tilting Axis		Nm	24,000	24,000	32,000	40,000	
Clamping torque (Std)		lb in	207,874	207,874	277,165	346,456	
Maximum Load Moment		Nm	20,000	35,000	40,000	50,000	
		lb in	173,228	303,150	346,457	433,070	
Rotary Axis		Nm	11,000	11,000	19,000	27,000	
Max. Milling torque		lb in	95,276	95,276	164,567	233,858	
Tilting Axis		Nm	30,000	35,000	40,000	50,000	
Max. Milling torque		lb in	259,842	301,500	346,457	433,070	
Rotary Axis Main gear Ratio			360:1	360:1	360:1	360:1	
Tilting Axis Main Gear Ratio			4680:1	4680:1	4680:1	4680:1	
Parallelism		mm	.030	.030	.040	.040	
		inches	.0012	.0012	.0016	.0016	
Face Plate Runout (0.9 x D max)		mm	.020	.020	.020	.030	
		inches	.0008	.0008	.0008	.0012	
Runout of Center Bore		mm	.010	.010	.010	.010	
		inches	.0004	.0004	.0004	.0004	

Available Options

- Hand Scraped Table Top Surface
- Customized Table Top
- Workpiece Clamping System
- Prepared for Pallet System
- Alternative Measuring Systems made by Heidenhain. i.e. (ROD 800 or In-ductosyn)
- Air Inlet for Internal Pressurization
- Various Motors and Intermediate Gear Boxes
- Prepared for Linear Axis (Saddle)
- Hydraulic Unit for the Clamping System
- Other Paint Surface Finishes
- NC Systems to Suit Your Application

Standard Resolution

.0001 degree (others on request)

Standard Accuracy

+/- 15 arc seconds to +/- 3 arc seconds. (Higher on request)

Clamp Release Pressure

90 bar or 1300 psi

Painted Surface Finish

RAL-color range in textured surface finish

For other specifications please contact our Technical department. The rights for technical modifications are reserved.

Reference dimensions only. Approval prints are supplied on all tables.

Call Rusach International

100 Raymond Street

Hope, IN 47246

Phone: 317-638-0298

www.rusach.com



Every Challenge Has A Solution