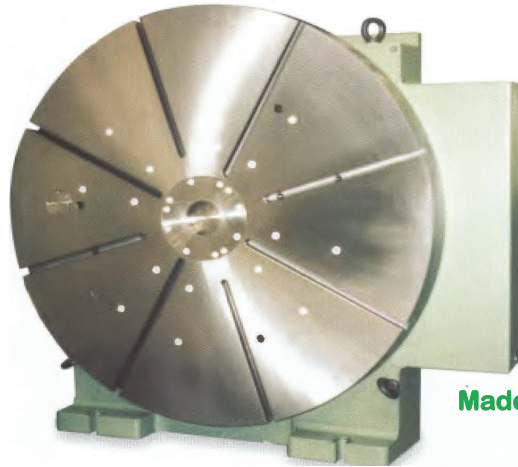


5-Series: Vertical NC Rotary Tables—Range B



A Precision Range offering great versatility



Made In The USA

The Rusach Advantages

Application

For situations that require table sizes between 800mm and 2000mm diameter in the vertical position. With high accuracy and high loading capacities, they are suitable for heavy machining and metrology applications.

Bearing

Preloaded axial-radial roller bearings are incorporated, to provide high rigidity in both planes. Sensitivity and fine positioning are ensured.

Clamping

Distortion free passive clamping by preloaded spring elements and hydraulic release.

Measuring Systems

High precision Heidenhain angular encoders and rotary inductosyns are standard.

Motors

DC and AC motors.

Construction

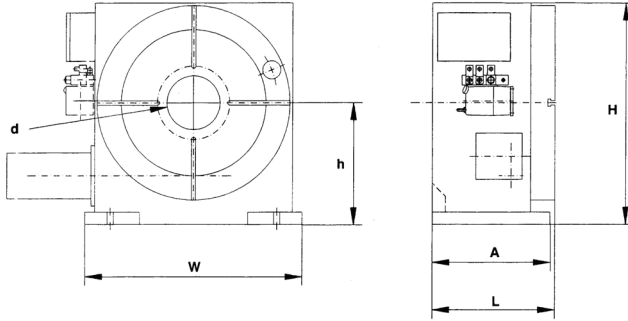
The modular design permits freedom to match application requirements. The worm gear drive is specially configured for maximum torque and minimum (adjustable) backlash.

RUSACH INTERNATIONAL



Every Challenge Has A Solution

5-Series: Vertical NC Rotary Tables—Range B



Technical Data		Unit	5-08	5-10	5-12	5-16	
Type Designation			D800	D1000	D1250	D1600	
			D1000	D1250	D1600	D2000	
Table Size		mm	800	1000	1250	1600	
		Inches	31.50	39.37	49.21	62.99	
		mm	1000	1250	1600	2000	
		Inches	39.37	49.21	62.99	78.74	
T-slots (DIN 650)	Size	mm	18	18	22	22	
	number		8	8	8	8	
Dimension	L	mm	500	610	810	1000	
		Inches	19.86	24.02	31.89	39.37	
	W	mm	820	1010	1250	1600	
		Inches	32.28	39.76	49.21	62.99	
	H	mm	860	1055	1300	1650	
		Inches	33.86	41.54	51.18	64.96	
		mm	1050	1300	1650	2050	
		Inches	43.31	52.16	66.93	82.68	
	A	mm	490	600	800	990	
		Inches	19.29	23.62	31.50	38.98	
	Centre Hole	d	mm	100	100	100	100
			Inches	3.94	3.94	3.94	3.94
Weight (Approx.)	h	mm	450	550	675	850	
		Inches	17.72	21.65	26.57	33.46	
		kg	1,000	1,550	3,500	7,000	
		lb	2,200	3,410	7,700	15,400	
Loading Capacity (uniform)		kg	2,500	6,000	9,000	15,000	
		lb	5,500	13,200	19,800	33,000	
Permitted Machining Force		N	63,000	80,000	100,000	150,000	
		lb	13,860	17,600	22,000	33,000	
Clamping Torque (standard)		Nm	17,000	22,000	30,000	65,000	
		lb in	147,244	190,550	259,840	562,992	
Max. Milling Torque		Nm	11,000	19,000	27,000	60,000	
		lb in	95,275	164,567	233,858	519,685	
Main Gear Ratio (standard)			360:1	360:1	360:1	360:1	
Face Plate Runout (0.9 x D Max)		mm	0,015	0,015	0,020	0,020	
		inches	0,0006	0,0006	0,0008	0,0008	
Runout of Centre Bore		mm	0,010	0,010	0,010	0,010	
		inches	0,0004	0,0004	0,0004	0,0004	
Squareness of Table to Base		mm/300mm	0.01	0.01	0.01	0.01	
		inches/12 inches	0.0004	0.0004	0.0004	0.0004	

Available Options

- Hand scraped table top surface
- Customized table top
- Workpiece clamping system
- A horizontal and vertical version can be supplied. (Dual purpose)
- Air inlet for internal pressurization
- Various motors and intermediate gear boxes
- Prepared for linear axis (saddle)
- Hydraulic unit for the clamping system
- Other paint surface finishes
- NC systems to suit your application

Standard Resolution

.0001 degree (others on request)

Standard Accuracy

Total dividing accuracy 3 arc seconds. (Higher on request).

Clamp Release Pressure

90 bar or 300 psi

Painted Surface Finish

RAL-color range in textured surface finish

For other specifications please contact our Technical department.

The rights for technical modifications are reserved)

Call Rusach International

100 Raymond Street

Hope, IN 47246

Phone: 317-638-0298

www.rusach.com



Every Challenge Has A Solution