

# Rusach International

## 8-Series: Pallet Changers & FMS

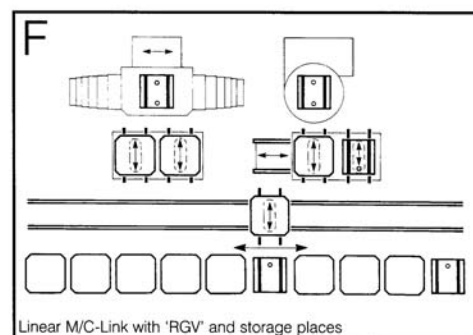
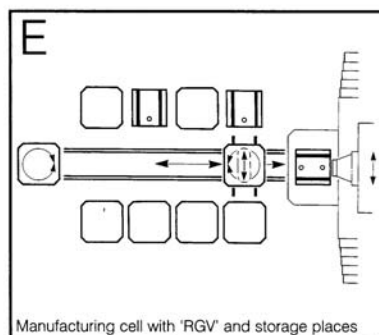
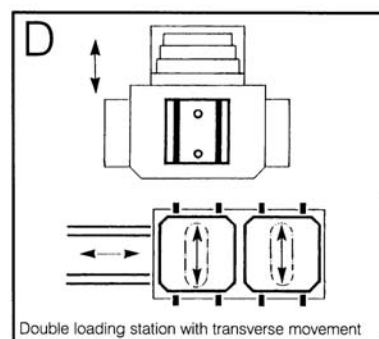
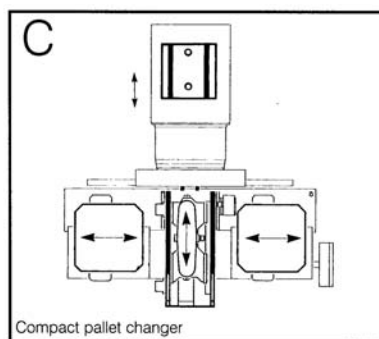
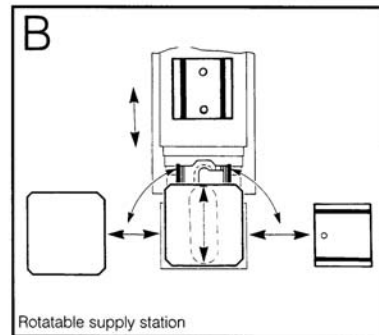
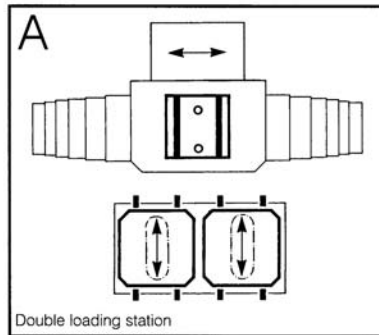
630mm thru 2,500mm

A complete range of automation components for single, dual or multiple shuttle systems or FMS type installations. Larger and custom sizes and solutions are available upon request.



Made in the USA

### Typical Configurations



Every Challenge Has A Solution

# 8-Series: Pallet Changers & FMS

Other sizes quoted on request

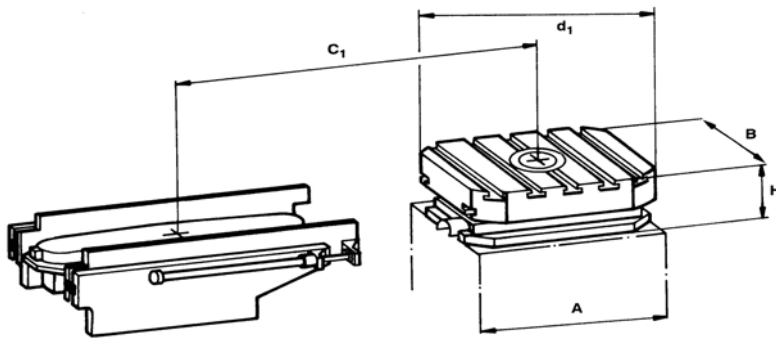
Call Rusach International

100 Raymond Street

Hope, IN 47246

Phone: 317-638-0298

[www.rusach.com](http://www.rusach.com)



Reference dimensions only. Approval prints are supplied on all systems.

Technical Data		Units	8-06	8-08	8-10	8-12	8-16	8-20
Type Designation	Square		630x630	800x800	1000x1000	1250x1250	1600x1600	2000x2000
	Round		D800	D1000	D1250	D1600	D2000	D2500
	Rectangle		630x800	800x1000	1000x1250	1250x1600	1600x2000	2000x2500
Pallet Dimension (Din55201 Form B)	Square	mm inches	630x630 24.80x24.80	800x800 31.50x31.50	1000x1000 39.37x39.37	1250x1250 49.21x49.21	1600x1600 62.99x62.99	2000x2000 78.74x78.74
	Round	mm inches	800 31.50	1000 39.37	1250 49.21	1600 62.99	2000 78.74	2500 98.42
	Rectangle	mm inches	630x800 24.80x31.50	800x1000 31.50x39.37	1000x1250 39.37x49.21	1250x1600 49.21x62.99	1600x2000 62.99x78.74	2000x2500 78.74x98.42
T-Slots (DIN 650)	mm	Size	18	22	22	22	22	22
		Number	5	7	9	11	13	15
Rounded Corners	d <sub>1</sub>	mm	1,000	1,250	1,600	2,000	2,500	3,200
		inches	39.37	49.21	62.99	78.74	94.43	125.98
Total Height (H)	Square	mm inches	240 9.45	260 10.24	300 11.81	340 13.39	375 14.76	420 16.53
	Round	mm inches	250 9.84	270 10.63	310 12.2	350 13.78	390 15.35	435 17.13
	Rectangle	mm inches	250 9.84	270 10.63	310 12.20	350 13.78	390 15.35	435 17.13
Max Pallet Stroke	c <sub>1</sub>	mm	1,593	1,772	2,226	2,479	3,107	3,489
		inches	62.83	69.76	87.64	97.60	122.32	137.36
Clamping Station Weight		kg	160	300	520	760	1,150	2,200
		lb	352	660	1,144	1,672	2,530	4,840
Pallet Weight	Square	kg	250	460	1,100	2,050	3,850	6,650
		lb	550	1,012	2,420	4,510	8,470	14,630
	Round	kg	200	360	890	1,650	3,050	5,250
		lb	440	792	1,958	3,630	6,710	11,550
Rectangle	kg	300	600	1,190	2,550	4,650	9,500	
	lb	660	1,320	2,618	5,610	10,230	20,900	
Loading (uniform)		kg	1,000	1,600	2,500	4,000	6,500	10,000
		lb	2,200	3,520	5,500	8,800	14,300	22,000
Vertical Machining Force		N	25,000	32,000	40,000	63,000	100,000	100,000
		lb	5,500	7,040	8,800	13,860	22,000	22,000
Moment of Load		Nm	25,000	40,000	50,000	60,000	80,000	100,000
		Lb ft	18,044	28,871	36,090	43,307	57,743	72,178
Clamping Force (Standard)		N	180,000	240,000	300,000	360,000	480,000	600,000
		lb	39,600	52,000	66,000	79,200	105,600	132,000
Machining Torque		Nm	25,000	40,000	50,000	60,000	80,000	100,000
		Lb ft	18,044	28,871	36,090	43,307	57,743	72,178
Parallelism		mm	0.030	0.030	0.030	0.040	0.040	0.040
		inches	0.0012	0.0012	0.0012	0.0016	0.0016	0.0016
Repeatability		mm	0.020	0.020	0.025	0.025	0.030	0.030
		inches	0.0008	0.0008	0.0010	0.0010	0.0012	0.0012

For other specifications please contact our technical department. The rights for technical modifications are reserved.

**Every Challenge Has A Solution**