



Rusach International

Air Bearing Series Inspection Tables

100mm thru 1,200mm

Made in the USA

The Rusach Advantages

Application

Rotary tables specifically developed for use in Metrology applications. CMM tables, inspection tables, assembly tables. Range of sizes 100mm thru 1,200mm.

Bearing

When rotating, the table top and work load are supported on air bearings whose freedom from friction contributes to extremely high positional accuracy. High precision needle roller bearing maintains radial accuracy.

Table Top

Machined to your specifications. T-Slots, bolt pattern or smooth top.

Measuring Systems

Standard mechanical accuracy of +/- 15.0 Arc Seconds. High precision Heidenhain encoders are offered for increased accuracies to +/-1.0 arc seconds.

Motors

Free spin for hand rotation supplied with a turning ring. Motors are an option if required.

Construction

High grade stabilized cast iron base and rotary platen ensure rigidity and precision.

Air Preparation Unit

Supplied with each table. On/off switch controls the compressed air supply to table. Interlocking ensures that motor drive can only operate if air supply is on. When air supply is off, table sits firmly on base casting with extremely high accuracy of parallelism between top surface and the underside of base.

Options

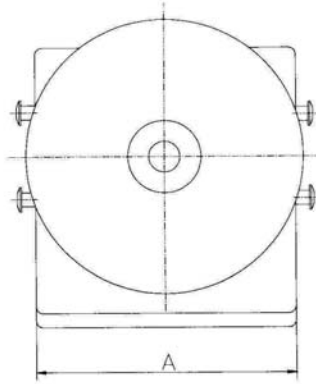
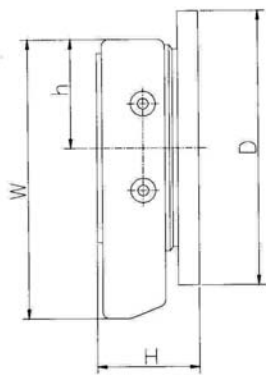
- Free Standing Floor Mounted
- Table Top Models
- Complete Geometric Circular Inspection Systems available
- Independent Controllers
- Optional RAL paint colors
- Work Piece Clamping Systems
- Customized Table Tops
- Solutions Designed, Engineered & Manufactured to your Specific Application
- See our Metrology flyer for Circular Geometric Inspection Systems
- See our 2-Series Horizontal NC Rotary Table Range C Air for Large Diameter (2,000mm to 5,000mm) Air Bearing Rotary Tables



100 Raymond Street, Hope, IN, USA 47246 www.rusach.com 317-638-0298 sales@rusach.com

Every Challenge Has A Solution

Air Bearing Series Inspection Tables



Technical Data - Dimensions are for reference and are approximate, approval drawings are supplied on all tables.									
Other sizes are available per application - Please inquire with sales on your specific application - Our specialty is BIG & ACCURATE!									
Dimensions	Unit	Air 100	Air 150	Air 200	Air 400	Air 600	Air 800	Air 1000	Air 1200
A	mm	100	160	205	560	560	560	960	960
	inch	3.94	6.29	8.07	22.05	22.05	22.05	37.80	37.80
D	mm	100	150	200	400	600	800	1000	1200
	inch	3.94	5.91	7.87	23.62	23.62	31.50	39.37	47.24
H	mm	65	70	70	225	250	250	310	310
	inch	2.56	2.76	2.76	10.04	9.84	9.84	12.21	12.21
W	mm	100	160	205	615	615	615	1020	1020
	inch	3.94	6.29	8.07	24.21	24.21	24.21	40.16	40.16
Weight Approx.	Kg	35	100	130	200	236	290	1470	1470
	Lb	77	220	286	440	520	639	3240	3240
Table are built to your application!									
Geometric Tolerances									
Flatness	mm	.002	.005	.005	.010	.010	.010	.015	.015
	inch	.00007	.0002	.0002	.0004	.0004	.0004	.0006	.0006
Rotation	mm	.002	.005	.005	.005	.005	.005	.008	.008
	inch	.00007	.0002	.0002	.0002	.0002	.0002	.0003	.0003
Parallelism	mm	.005	.010	.010	.020	.020	.020	.040	.040
	inch	.0002	.0004	.0004	.0008	.0008	.0008	.002	.002
Concentricity	mm	.010	.010	.010	.010	.010	.010	.015	.015
	inch	.0004	.0004	.0004	.0004	.0004	.0004	.0006	.0006
Truth of Axis	mm	.0005	.001	.001	.010	.010	.010	.015	.015
	inch	.00002	.00004	.00004	.0004	.0004	.0004	.00006	.00006
Maximum Load	Kg	50	100	100	800	800	800	6000	6000
	Lb	110	220	220	1764	1764	1764	13228	13228

For other specifications please contact our technical department. The rights for technical modifications are reserved.

Reference dimensions only. Approval prints are supplied on all tables.

- Designed, Engineered & Manufactured in the USA
- Complete State of the Art Circular Geometric Inspection System also Available. Please see our Metrology Flyer
- Other Diameters Available
- For Larger (2000mm + Diameters), Please see our 2-Series Horizontal Air Bearing Rotary Tables Flyer

Every Challenge Has A Solution