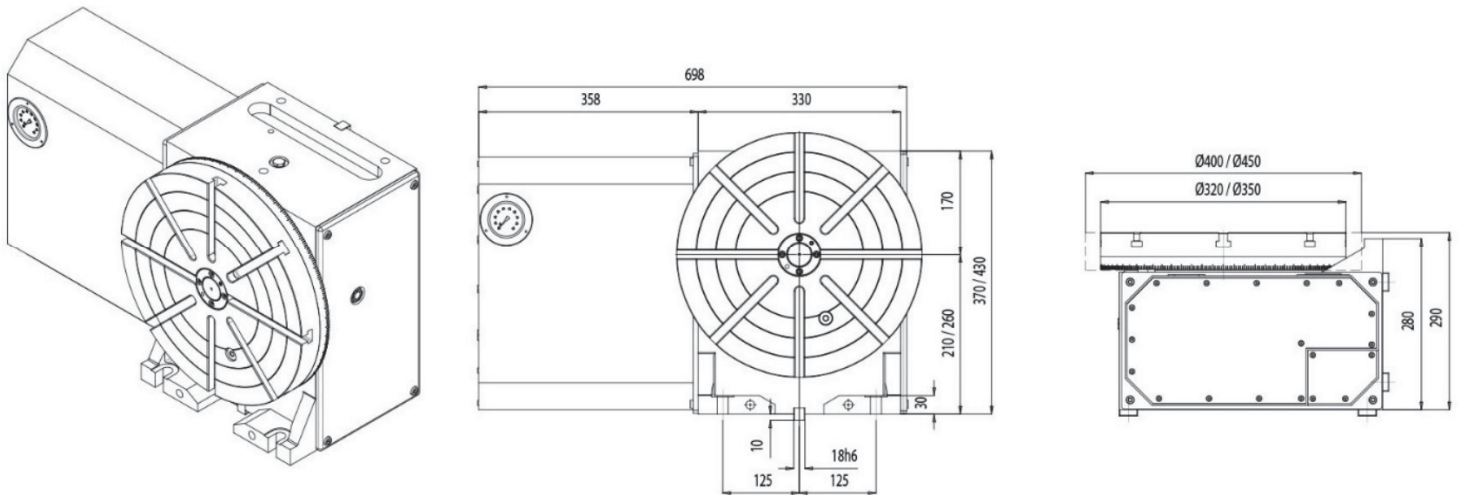


Series A1-HV

One Axis Rotary Table (Convertible Horizontal / Vertical)

Size range 320mm thru 450mm

(12 inch rotary table thru 17 inch rotary table)



Specifications

- Horizontal/Vertical Axis Working Conditions
- Compact and Flexible Design Casting Body
- Robust and Rigid Body Allowing Heavy Machining
- Improved Brake System Avoiding Distortions and Improving Machining Conditions
- Powerful Pneumatic Clamping Torque
- High Accuracy

Options

- Available with All Types of Motors
- Flexible Motor Positioning (Right, Left)
- Rotary Encoder can be Fitted to Further Increase Accuracy
- Available Through Bore Option

Accessories

- Tailstock (Manual, Pneumatic, Hydraulic)

- Tail Spindle
- Trunnion
- Rotary Joint
- Face Plate
- Scroll Chuck with Jaws
- Steady Rest
- Rotary Support

TECHNICAL DESCRIPTION

| | | A1-D320-HV | A1-D350-HV | A1-D400-HV | A1-450-HV |
|------------------------------------|-----------------|----------------------------|---|------------|-----------|
| Face plate diameter | mm | Ø320 | Ø350 | Ø400 | Ø450 |
| Face plate "T" slot width | mm | (1) 14H7 - Rest. 14H10 | | | |
| Type of slots | - | Radial (optional Parallel) | | | |
| Distance between slots | - | To determine by customer | | | |
| Plate height (horizontal position) | mm | 290 | 290 | 290 | 290 |
| Center height | mm | 210 | 210 | 260 | 260 |
| Center bore nose diameter | mm | Ø40H7x30 | | | |
| Guide block width | mm | 18h6 | | | |
| Clamping distance to table | mm | 125 | | | |
| Standard configuration | - | Horizontal / Vertical axis | | | |
| Motor position | - | Right (opt. left) | | | |
| Indexing accuracy - direct encoder | arc sec | Optional ERN480 ± 12" | | | |
| Indexing accuracy - direct encoder | arc sec | - | RCN2380 ± 5" RCN2580 / RCN2590F ±2,5 " | | |
| Repeatability | arc sec | ±2" | | | |
| Main bearing diameter | mm | 150x240x40 | | | |
| Clamping system | - | Hydraulic | | | |
| Clamping torque | Nm | 870 | 870 | 870 | 870 |
| Clamping pressure | Bar | 40 | 40 | 40 | 40 |
| Work load - Plate horizontal | Kg ₁ | 350 | 350 | 500 | 500 |
| Work load - plate vertical | | 175 | 175 | 250 | 250 |
| Work load - plate vertical W/TS | | 350 | 350 | 500 | 500 |
| Maximum axial force - Horizontal | N ³ | 30.000 | 30.000 | 30.000 | 30.000 |

| | | A1-D320-HV | A1-D350-HV | A1-D400-HV | A1-450-HV |
|------------------------------------|-------------------|---------------------|------------|---------------------|------------|
| Maximum axial force - Vertical | N ³ | 8.000 | 8.000 | 8.000 | 8.000 |
| Tilting moment - Horizontal | Nm ³ | 4.250 | 4.250 | 4.250 | 4.250 |
| Tilting moment - Vertical | Nm ³ | 2.000 | 2.000 | 2.000 | 2.000 |
| Transmissible torque maximum speed | Nm | 440 | 440 | 720 | 720 |
| Recommended motor torque | Nm | 11 | 11 | 18 | 18 |
| Motor speed | rpm | 2000/3000 | | | |
| Table rotation speed | rpm ⁴ | 12,5/18,75 | 12,5/18,75 | 12,5/18,75 | 12,5/18,75 |
| Gear and pinion reduction | i | 80/1 | 80/1 | 80/1 | 80/1 |
| Belt / Pulley | i | 2/1 | 2/1 | 2/1 | 2/1 |
| Total reduction ratio | i ² | 160/1 | 160/1 | 160/1 | 160/1 |
| Flatness of plate turning | mm | 0,020 | 0,020 | 0,020 | 0,020 |
| Perpendicularity | mm | 0,020 | 0,020 | 0,020 | 0,020 |
| Concentricity center bore | mm | 0,010 | 0,010 | 0,010 | 0,010 |
| Net weight (W/O Motor) | Kg | 215 | 230 | 300 | 315 |
| Equipped with digital servo motor | SIEMENS | 1FK7 063-2AF71-1AG0 | | 1FK7 083-2AF71-1AG0 | |
| | HEIDENHAIN | QSY 116J EcoDyn | | QSY 155B EcoDyn | |
| | FAGOR | FKM 44.30A | | FKM 64.30A | |
| | FANUC | ALPHA ais8/4000HV | | ALPHA ais12/4000HV | |
| Moment of inertia (approx.) | Kg.m ² | 3,7 | 3,8 | 9,7 | 9,8 |
| Lubrication oil CEPSA EP-80W90 | | | | | |

USA Sales, Service & Repair Contact

Rusach International

100 Raymond Street Hope, IN, USA 47246

317-638-0298 www.rusach.com sales@rusach.com

