

IRTS | Innovative Rotary Table Solutions

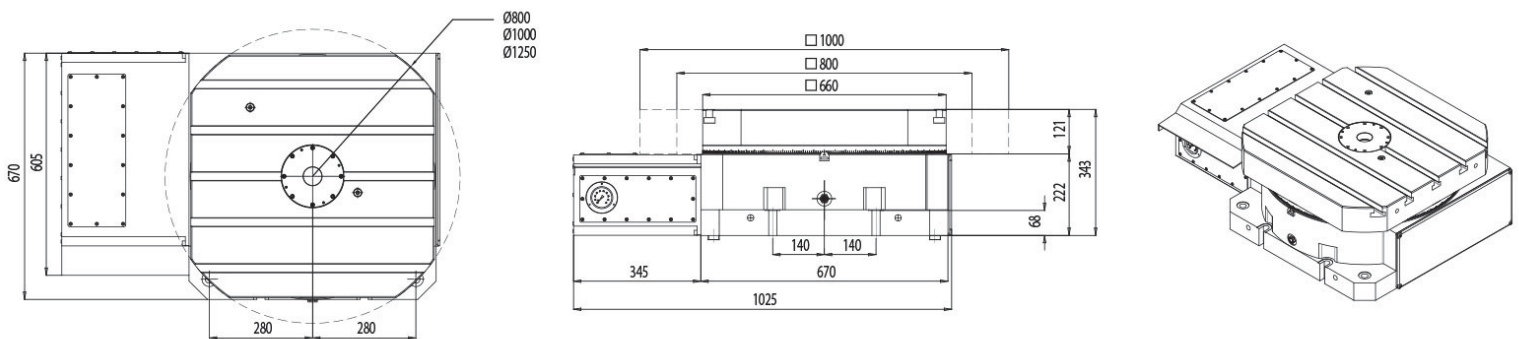
SERIES C1-V

One Axis Rotary Table (Machining on Vertical Axis)

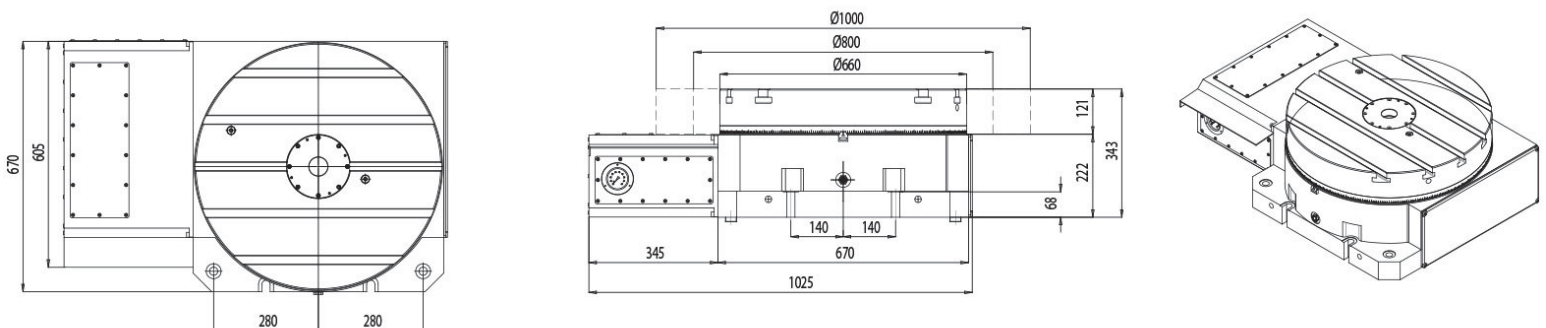
Size Range 660mm thru 1,000mm

(25 inch rotary table thru 40 inch rotary table)

C1-D660-V C1-D800-V C1-D1000-V (Optional Square Platen)



C1-C660-V C1-C800-V C1-C1000-V (Round Platen)



Specifications

- Vertical Axis Working Conditions
- Compact and Flexible Design Casting Body
- Robust and Rigid Body Allowing Heavy Machining
- Improved Brake System Avoiding Distortions and Improving Machining Conditions
- Powerful Pneumatic Clamping Torque
- High Accuracy

Options

- Available with All Types of Motors
- Flexible Motor Positioning (Right, Left)
- Rotary Encoder can be Fitted to Further Increase Accuracy

Accessories

- Rotary Joint
- Face Plate
- Scroll Chuck with Jaws

TECHNICAL DESCRIPTION

		C1-660-V	C1-800-V	C1-1000-V
Face plate diameter	mm	Ø 660	Ø 800	Ø 1.000
Face plate "T" slot width	mm	(1) 22H7 - Rest. 22H10		
Type of slots	-	Radial (optional Parallel)		
Distance between slots	-	To determine by customer		
Plate height (horizontal position)	mm	343		
Center height	mm	-		
Center bore nose diameter	mm	Ø50H7x30		
Guide block width	mm	22h6 (opt.18h6)		
Clamping distance to table	mm	125/250		
Standard configuration	-	Vertical axis		
Motor position	-	Right (opt. left)		
Indexing accuracy - direct encoder	arc sec	RCN2380/90F ± 5" (R.Table ±7") / RCN2580/90F ±2,5" (R.Table ±5")		
Indexing accuracy - direct encoder	arc sec	RCN8380/90F ± 2" (R.Table ±4") / RCN8580/90F ±1" (R.Table ±3")		
Repeatability	arc sec	±1"		
Main bearing diameter	-	395x525x65		
Clamping system	-	Hydraulic		
Clamping torque	Nm	4.150	4.150	4.150
Clamping pressure	Bar	40	40	40
Work load - Plate horizontal	Kg ¹	4.000	4.000	4.000
Work load - plate vertical		-		

Work load - plate vertical W/TS		-		
Maximum axial force - Horizontal	N ³	75.000	75.000	75.000
Maximum axial force - Vertical	N ³	-		
Tilting moment - Horizontal	Nm ³	22.000	22.000	22.000
Tilting moment - Vertical	Nm ³	-		
Transmissible torque max. speed	Nm	2.675 (opt. 4.500)	2.675 (opt. 4.500)	2.675 (opt. 4.500)
Recommended motor torque	Nm	27	27	27
Motor speed	rpm	2000/3000		
Table rotation speed	rpm ⁴	11,11 / 16,66	11,11 / 16,66	11,11 / 16,66
Gear and pinion reduction	i	90/1	90/1	90/1
Belt / Pulley	i	2/1 (opt.3/1)	2/1 (opt.3/1)	2/1 (opt.3/1)
Total reduction ratio	i ²	180/1 (opt.270/1)	180/1 (opt.270/1)	180/1 (opt.270/1)
Flatness of plate turning	mm	0,020	0,020	0,020
Perpendicularity	mm	0,020	0,020	0,020
Concentricity center bore	mm	0,010	0,010	0,010
Net weight (W/O Motor)	Kg	800	1.100	1.225
Equipped with digital servo motor	SIEMENS	1FK7 101-2AF71-1AG0		
	HEIDENHAIN	QSY 155D EcoDyn		
	FAGOR	FKM 83.30A		
	FANUC	ALPHA αis22/4000HV		
Moment of inertia (approx..)	Kg.m ²	520	550	575
Lubrication oil CEPSA EP-80W90				

USA Sales, Service & Repair Contact

Rusach International

100 Raymond Street Hope, IN, USA 47246

317-638-0298 www.rusach.com sales@rusach.com

