

IRTS | Innovative Rotary Table Solutions

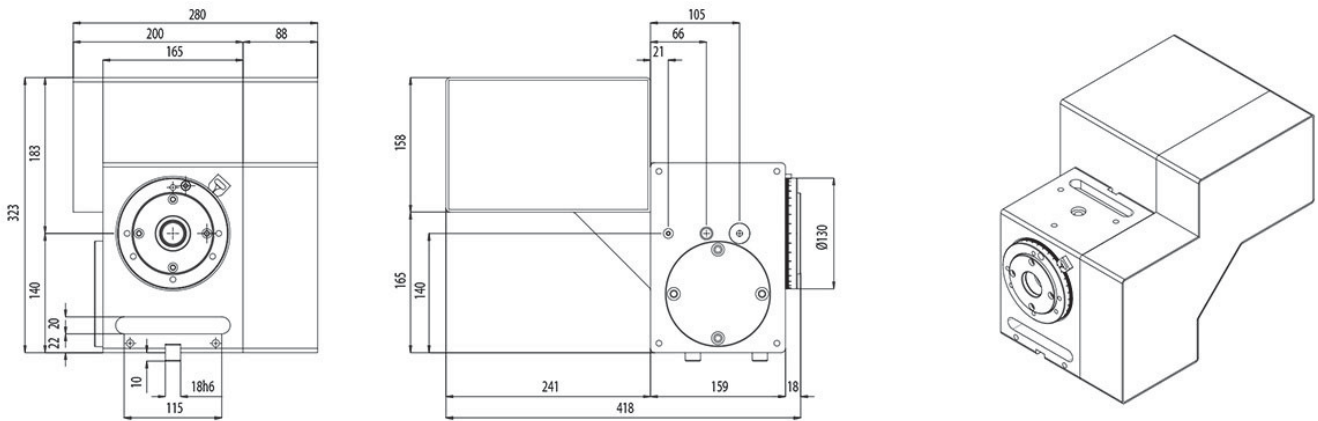
SERIES CNC-H

One Axis Compact Rotary Table (Machining on Horizontal Axis)

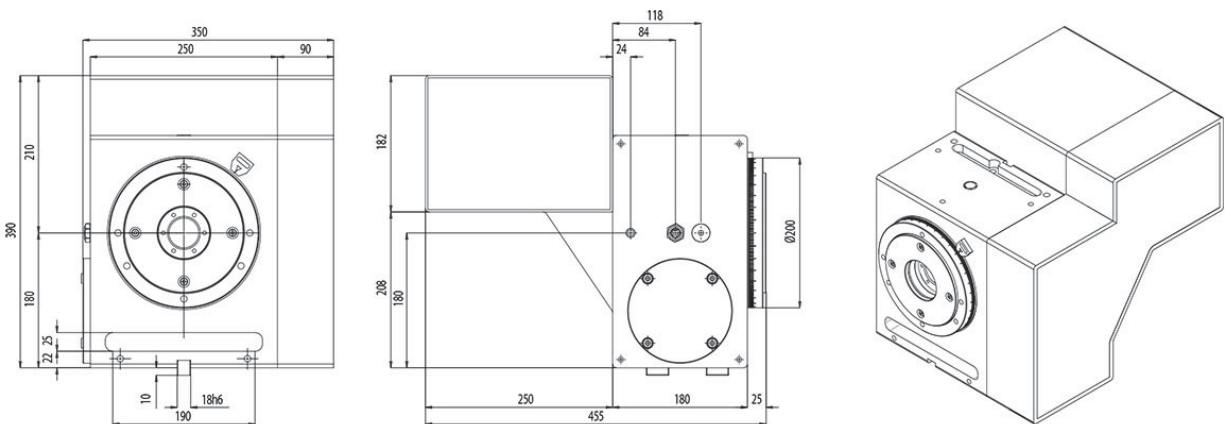
Size Range 125mm thru 250mm

(4 inch rotary table, 8 inch rotary table, 10 inch rotary table)

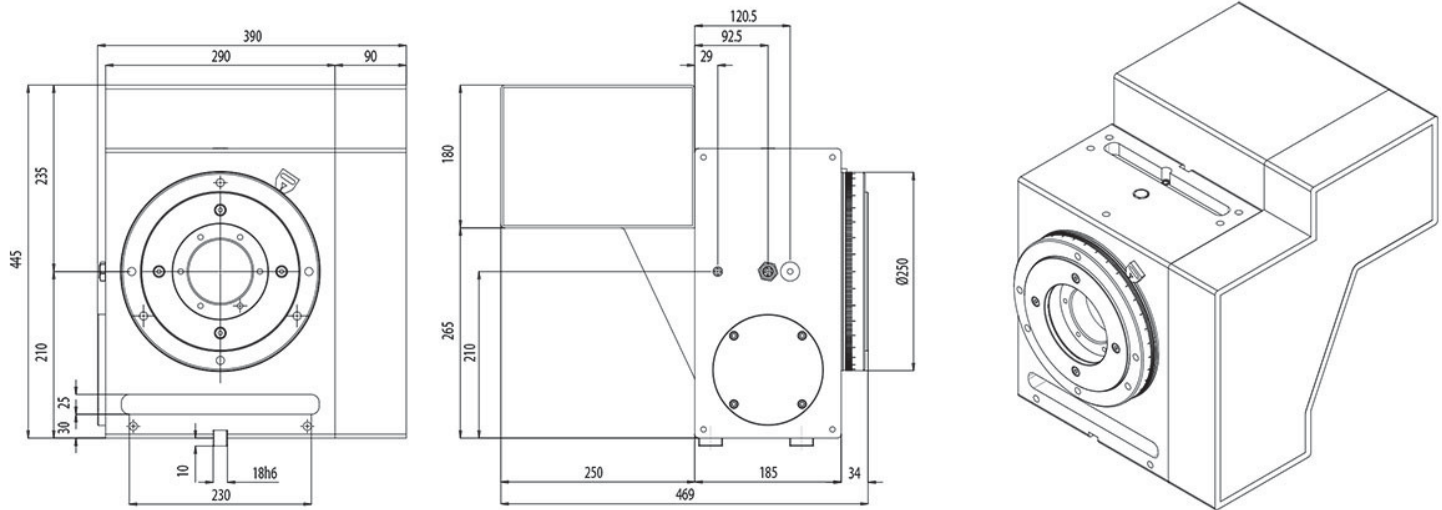
CNC-125-H



CNC-200-H



CNC-250-H



Specifications

- Horizontal Axis Working Conditions
- Compact and Flexible Design Casting Body
- Robust and Rigid Body Allowing Heavy Machining
- Improved Brake System Avoiding Distortions and Improving Machining Conditions
- Powerful Pneumatic Clamping Torque
- High Accuracy
- High Speed Rotation
- Ideal for Compact Machining Centers
- Space Saving Rotary Table

Options

- Available with All Types of Motors
- Flexible Motor Positioning (Right, Left)
- Available Air Booster and Hydraulic Clamping
- Rotary Encoder can be Fitted to Further Increase Accuracy

Accessories

- Tailstock (Manual, Pneumatic, Hydraulic)
- Tail Spindle
- Trunnion
- Rotary Joint
- Scroll Chuck with Jaws
- Steady Rest
- Rotary Support

TECHNICAL DESCRIPTION

		CNC-125-H	CNC-200-H	CNC-250-H
Spindle outer diameter	mm	Ø95	Ø160	Ø200
Face plate diameter	mm	Opt. Ø160 -Ø200	Opt. Ø220 -Ø260 - Ø315	Opt. Ø260 -Ø315
Face plate "T" slot width	mm	Opt. (1) 14H7 - Rest. 14H10		
Type of slots	-	Optional Radial		
Center bore through dia.	"	Ø 25	Ø 40	Ø 80
Plate height (horizontal position)	mm	-	-	-
Center height	mm	140	180	210
Center bore nose diameter	mm	Ø40H7x25	Ø70H7x30	Ø120H7x30
Guide block width	mm	18h6		
Clamping distance to table	mm	125		
Standard configuration	-	Horizontal axis		
Motor position	-	Right (opt. left)		
Indexing accuracy - W/O direct encoder	arc sec	± 25"	± 20"	± 20"
Indexing accuracy - direct encoder	arc sec	Optional ± 15" (ERN180 Ø50 - limits through center bore to Ø50)		
Repeatability	arc sec	±4"		
Main bearing diameter	mm	50x126x30	100x185x38	150x240x40
Clamping system	-	Pneumatic (optional hydraulic)		
Clamping torque	Nm	400	750	1.000
Clamping pressure	Bar	6	6	6
Work load - Plate horizontal	Kg 1	-	-	-
Work load - plate vertical		85	125	175
Work load - plate vertical W/TS		170	250	350
Maximum axial force - Horizontal	N ³	-	-	-
Maximum axial force - Vertical	N ³	5.000	8.000	9.000
Tilting moment - Horizontal	Nm ³	-	-	-
Tilting moment - Vertical	Nm ³	1.000	2.000	2.000

Transmissible torque maximum speed	Nm	240	320	320
Recommended motor torque	Nm	6	8	8
Motor speed	rpm	2000/3000		
Table rotation speed	rpm ⁴	44,4/66,6	25,6/38,5	25/37,5
Gear and pinion reduction	i	45/1	78/1	80/1
Belt / Pulley	i	1/1 (opt. 2/1)	1/1 (opt. 2/1)	1/1 (opt. 2/1)
Total reduction ratio	i ²	45/1 (opt. 90/1)	78/1 (opt. 156/1)	80/1 (opt. 160/1)
Flatness of plate turning	mm	0,020	0,020	0,020
Perpendicularity	mm	0,020	0,020	0,020
Concentricity center bore	mm	0,010	0,010	0,010
Net weight (W/O Motor)	Kg	80	120	150
Equipped with digital servo motor	SIEMENS	1FK7 060-2AF71-1AG0	1FK7 063-2AF71-1AG0	
	HEIDENHAIN	QSY 116C	QSY 116J EcoDyn	
	FAGOR	FKM 42.30A	FKM 44.30A	
	FANUC	ALPHA ais4/5000HV	ALPHA ais8/4000HV	
Moment of inertia (approx.)	Kg.m ²	1,1	1,7	2,8
Lubrication Oil EP-80W90				

USA Sales, Service & Repair Contact

Rusach International

100 Raymond Street Hope, IN, USA 47246

317-638-0298 www.rusach.com sales@rusach.com

