

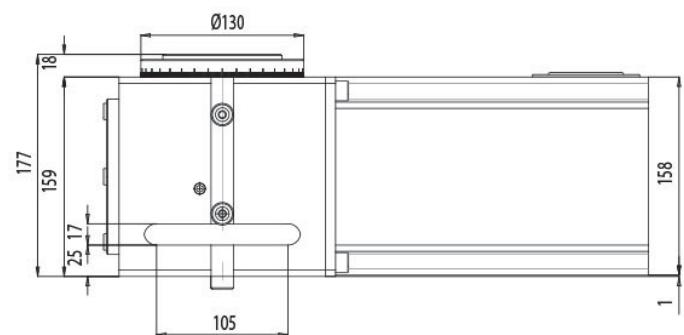
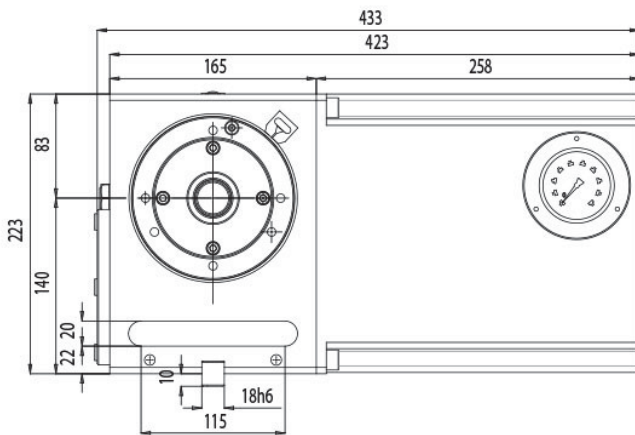
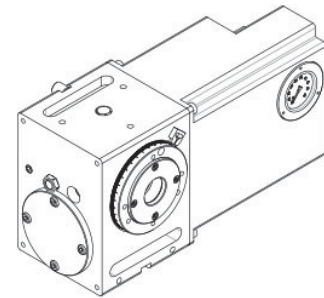
## SERIES CNC-HV

One Axis Compact Rotary Table (Machining on Horizontal Axis)

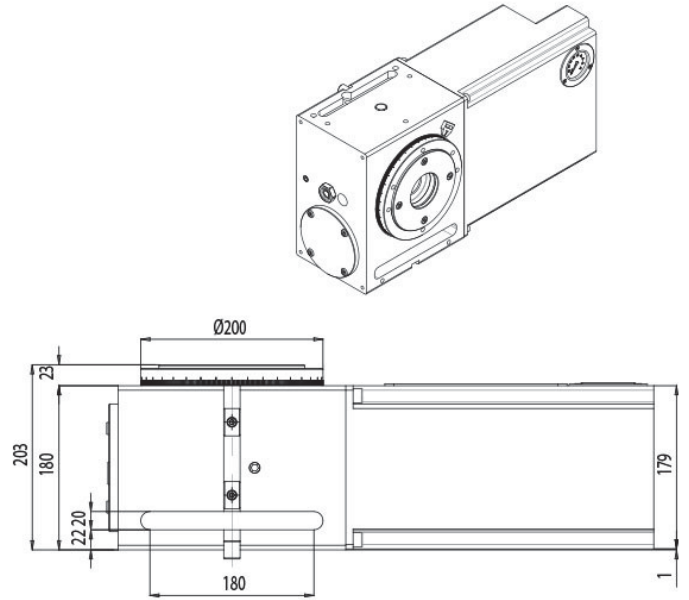
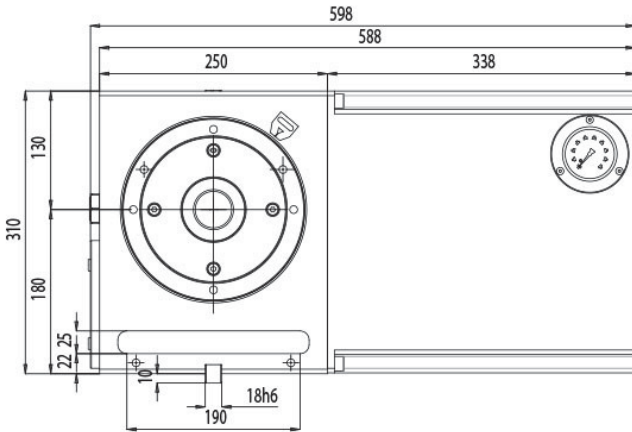
Size Range 125mm thru 250mm

(5 inch rotary table, 8 inch rotary table, 10 inch rotary table)

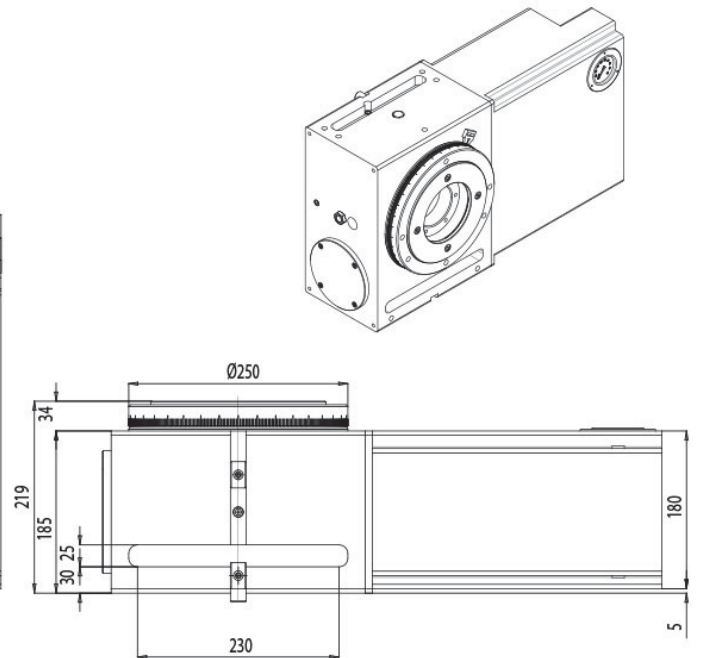
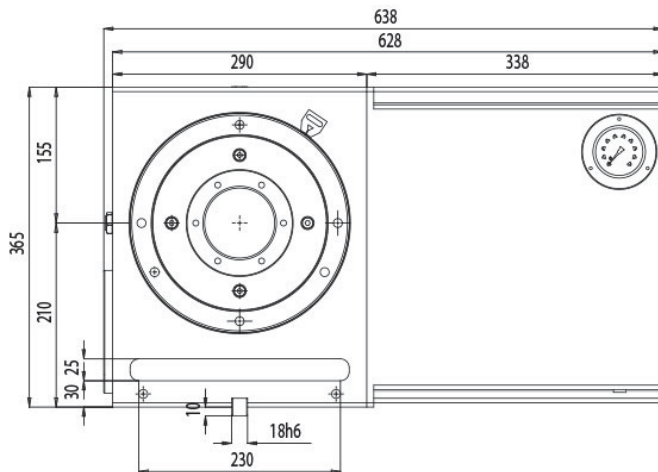
### CNC-125-HV



## CNC-200-HV



## CNC-250-HV



## Specifications

- Horizontal/Vertical Axis Working Conditions
- Compact and Flexible Design Casting Body
- Robust and Rigid Body Allowing Heavy Machining
- Improved Brake System Avoiding Distortions and Improving Machining Conditions
- Powerful Pneumatic Clamping Torque
- High Accuracy
- High Speed Rotation
- Ideal for Compact Machining Centers
- Space Saving Rotary Table

## Options

- Available with All Types of Motors
- Flexible Motor Positioning (Right or Left)
- Rotary Encoder Can be Fitted to Further Increase Accuracy
- Available Air Booster and Hydraulic Clamping

## Accessories

- Tail Stock (Manual, Pneumatic, Hydraulic)
- Tail Spindle
- Trunnion
- Rotary Joint
- Scroll Chuck with Jaws
- Steady Rest
- Rotary Support

## TECHNICAL DESCRIPTION

		CNC-125-HV	CNC-200-HV	CNC-250-HV
Spindle outer diameter	mm	Ø95	Ø160	Ø200
Face plate diameter	mm	Opt. Ø160 --Ø200	Opt. Ø220 - Ø260 - Ø315	Opt. Ø260 -Ø315
Face plate "T" slot width	mm	Opt. (1) 14H7 - Rest. 14H10		
Type of slots	-	Opt. Radial		
Center bore through diameter	"	Ø 25	Ø 40	Ø 80
Plate height (horizontal position)	mm	175	205	215
Center height	mm	140	180	210
Center bore nose diameter	mm	Ø40H7x25	Ø70H7x30	Ø120H7x30

Guide block width	mm	18h6		
Clamping distance to table	mm	125		
Standard configuration	-	Horizontal / Vertical axis		
Motor position	-	Right (opt. left)		
Indexing accuracy - W/O direct encoder	arc sec	± 25"	± 20"	± 20"
Indexing accuracy - direct encoder	arc sec	Optional ± 15" (ERN180 Ø50 - limits through center bore to Ø50)		
Repeatability	arc sec	±4"		
Main bearing diameter	-	50x126x30	100x185x38	150x240x40
Clamping system	-	Pneumatic (optional hydraulic)		
Clamping torque	Nm	400	750	1.000
Clamping pressure	Bar	6	6	6
Work load - Plate horizontal	Kg <sub>i</sub>	170	250	350
Work load - plate vertical		85	125	175
Work load - plate vertical W/TS		170	250	350
Maximum axial force - Horizontal	N <sup>3</sup>	10.000	22.500	27.500
Maximum axial force - Vertical	N <sup>3</sup>	5.000	8.000	9.000
Tilting moment - Horizontal	Nm <sup>3</sup>	1.500	3.500	4.000
Tilting moment - Vertical	Nm <sup>3</sup>	1.000	2.000	2.000
Transmissible torque maximum speed	Nm	240	320	320
Recommended motor torque	Nm	6	8	8
Motor speed	rpm	2000/3000		
Table rotation speed	rpm <sup>4</sup>	44,4/66,6	25,6/38,5	25/37,5
Gear and pinion reduction	i	45/1	78/1	80/1
Belt / Pulley	i	-	-	-
Total reduction ratio	i <sup>2</sup>	45/1	78/1	80/1
Flatness of plate turning	mm	0,020	0,020	0,020
Perpendicularity	mm	0,020	0,020	0,020
Concentricity center bore	mm	0,010	0,010	0,010

Net weight (W/O Motor)	Kg	80	120	150
Equipped with digital servo motor	SIEMENS	1FK7 060-2AF71-1AG0	1FK7 063-2AF71-1AG0	
	HEIDENHAIN	QSY 116C	QSY 116J EcoDyn	
	FAGOR	FKM 42.30A	FKM 44.30A	
	FANUC	ALPHA αis4/5000HV	ALPHA αis8/4000HV	
Moment of inertia (approx..)	Kg.m <sup>2</sup>	1,1	1,7	2,8
Lubrication Oil CEPSA EP-80W90				

## USA Sales, Service & Repair Contact

Rusach International

100 Raymond Street Hope, IN, USA 47246

317-638-0298 [www.rusach.com](http://www.rusach.com) sales@rusach.com

