

IRTS | Innovative Rotary Table Solutions

SERIES TB

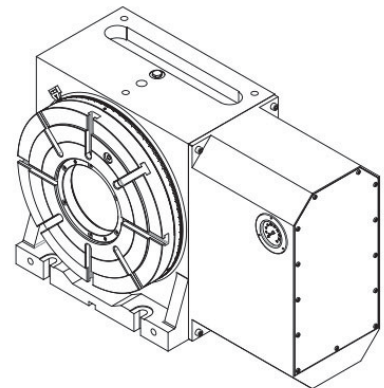
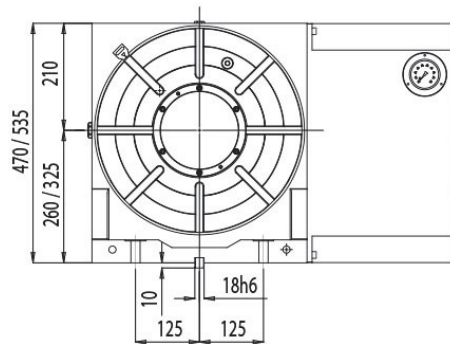
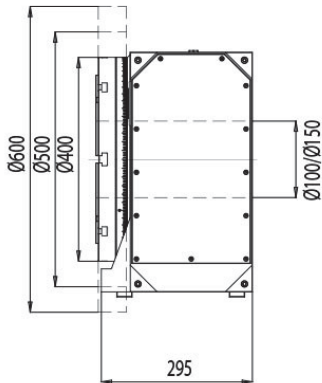
One Axis Thru Bore Rotary Table (Machining on Horizontal Axis)

Size Range 400mm thru 800mm Face Plate Diameter

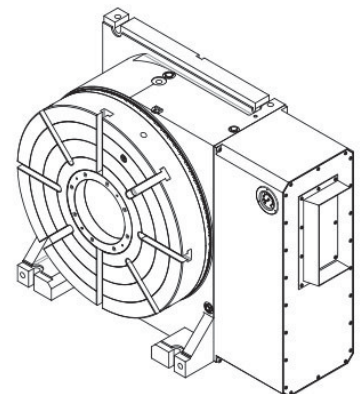
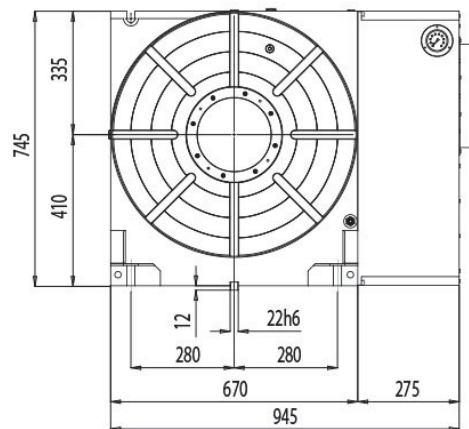
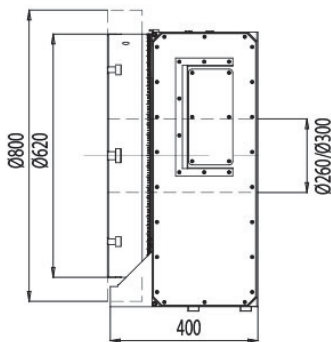
(4 inch thru bore diameter to 12 inch thru bore diameter)

Includes 6 inch thru bore rotary table

TB400H150 | TB500H100 | TB600H180



TB660H260 | TB800H300



Specifications

- Through Bore According to Model Specifications
- Horizontal Axis Working Conditions
- Compact and Flexible Design Casting Body
- Robust and Rigid Body Allowing Heavy Machining
- Improved Brake System Avoiding Distortions and Improving Machining Conditions
- Powerful Pneumatic Clamping Torque (Hydraulic Option)
- High Accuracy

Options

- Available with All Types of Motors
- Flexible Motor Positioning (Right or Left)
- Rotary Encoder can be Fitted to Further Increase Accuracy

Accessories

- Tail Stock (Manual, Pneumatic or Hydraulic)
- Tail Spindle
- Trunnion
- Rotary Joint
- Rotary Support
- Steady Rest
- Face Plate
- Scroll Chuck with Jaws

TECHNICAL DESCRIPTION

		TB400H150	TB500H100	TB600H180	TB660H260	TB800H300
Face plate diameter	mm	Ø400	Ø500	Ø600	Ø660	Ø800
Face plate "T" slot width	mm	(1) 14H7 - Rest. 14H10	(1) 18H7 - Rest. 18H10	(1) 22H7 - Rest. 22H10		
Type of slots	-	Radial				
Distance between slots	-	To determine by customer				
Plate height (horizontal position)	mm	300	335	335	410	410
Center height	mm	260	325	325	408	408
Center bore nose diameter	mm	Ø150	Ø100	Ø150	Ø260	Ø300
Guide block width	mm	18h6			22h6	
Clamping distance to table	mm	140/250				
Standard configuration	-	Horizontal / Vertical axis				
Motor position	-	Right (optional left)				
Indexing accuracy - direct encoder	arc sec	-	ERM2280C Ø130/176	ERM2280C Ø260/326	ERM2280C Ø380/452	
Indexing accuracy - direct encoder	arc sec	-	ERA4480C Ø150/208	ERA4480C Ø270/331	ERA4480C Ø425/484 S/Cubierta	
Repeatability	arc sec	±3"	±1"			
Main bearing diameter	-	200x300x45	260x385x55	325x450x60	395x525x65	460x600x70

Clamping system	-	Hydraulic				
Clamping torque	Nm	2.050	2.500	2.500	5.500	8.000
Clamping pressure	Bar	40				
Work load - Plate horizontal	Kg _i	1.000	1.500	2.500	4.000	5.000
Work load - plate vertical		500	750	1.000	2.000	2.500
Work load - plate vertical W/TS		1.000	1.500	2.500	4.000	5.000
Maximum axial force - Horizontal	N ³	40.000	40.000	55.000	75.000	100.000
Maximum axial force - Vertical	N ³	20.000	20.000	45.000	55.000	75.000
Tilting moment - Horizontal	Nm ³	8.000	8.000	16.000	22.000	35.000
Tilting moment - Vertical	Nm ³	4.000	4.000	14.000	18.000	26.000
Transmissible torque maximum speed	Nm	1.180	2.675	2.675	3.900	3.900
Recommended motor torque	Nm	12	27	27	27	27
Motor speed	rpm	2000/3000				
Table rotation speed	rpm ⁴	11,11 / 16,66	11,11 / 16,66	11,11 / 16,66	5,55 / 8,33	5,55 / 8,33
Gear and pinion reduction	i	90/1	90/1	90/1	120/1	120/1
Belt/pulley	i	2/1	2/1	2/1	3/1	3/1
Total reduction ratio	i ²	180/1	180/1	180/1	360/1	360/1
Flatness of plate turning	mm	0,020	0,020	0,020	0,030	0,030
Perpendicularity	mm	0,020	0,020	0,020	0,030	0,030
Concentricity center bore	mm	0,010	0,010	0,010	0,010	0,010
Net weight (W/O Motor)	Kg	400	450	630	2.050	3.150
Equipped with digital servo motor	SIEMENS	1FK7 083-2AF71-1AG0	1FK7 101-2AF71-1AG0			
	HEIDENHAIN	QSY 155B ECODYN	QSY 155D EcoDyn			
	FAGOR	FKM 64.30A	FKM 83.30A			
	FANUC	ALPHA αis12/4000HV	ALPHA αis22/4000HV			
Moment of inertia (approx.)	Kg.m ²	100	200	250	550	680
Lubrication Oil CEPSA EP-80W90						

USA Sales, Service & Repair Contact

Rusach International

100 Raymond Street Hope, IN, USA 47246

317-638-0298 www.rusach.com sales@rusach.com

