

SERIES TT

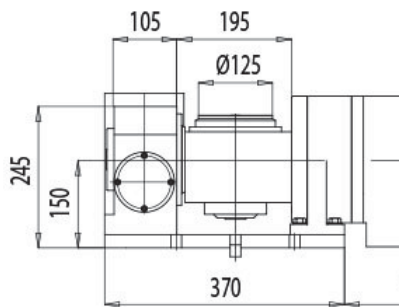
Two Axis Rotary Tilting Table

Size Range 125mm thru 400mm

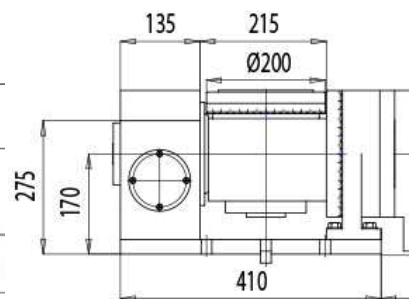
(4.92 Inches thru 15.75 Inches)

Two Axis Rotary Tilting Table – TILTING MULTIPLE SPINDLE – Per Application

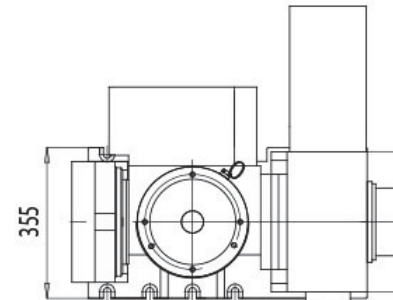
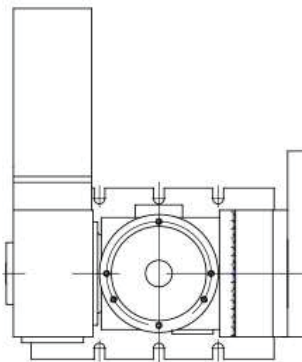
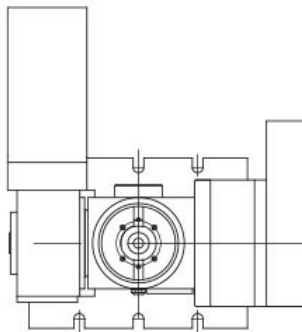
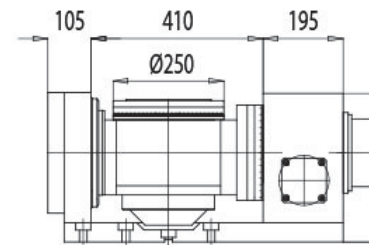
TT-150/125



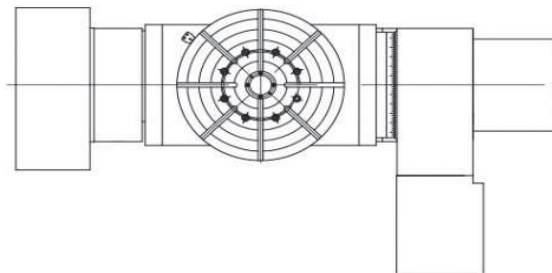
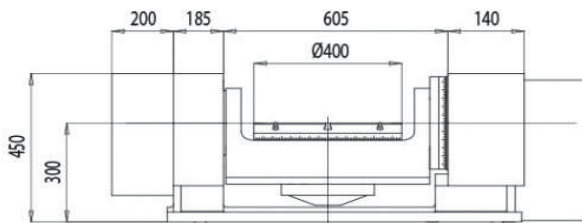
TT-170/200



TT-210/250



TT-300/400



Specifications

- Compact and Rigid Range of NC Rotary Tilting Tables
- Compact and Flexible Design Casting Body
- Robust and Rigid Body Allowing Heavy Machining
- Improved Brake System Avoiding Distortions and Improving Machining Conditions
- Powerful Pneumatic Clamping Torque (Hydraulic Option)
- High Accuracy

Options

- Available with All Types of Motors
- Rotary Encoder can be Fitted to Further Increase Accuracy
- Multi-Spindle Designs per Application

Accessories

- Tail Stock (Manual, Pneumatic or Hydraulic)
- Rotary Joint
- Face Plate
- Scroll Chuck with Jaws

TECHNICAL DESCRIPTION

		TT-150/125	TT-170/200	TT-210/250	TT-250/400	TT-300/400
Face plate diameter	mm	Ø125	Ø170- Ø200	Ø225- Ø250	Ø325- Ø400	Ø350- Ø400
Face plate "T" slot width	mm	To determine by customer				
Type of slots	-	To determine by customer				
Distance between slots	-	To determine by customer				
Plate height (horizontal axis)	mm	150	170	210	250	300
Center height (vertical axis)	mm	225	275	340	390	300
Center bore nose diameter	mm	Ø50H7x30				
Guide block width	mm	14h6 (opt.18h6)	18h6 (opt.22h6)	22h6 (opt.18h6)		
Clamping distance to table	mm	125/250				
Motor position	-	Right (optional left)				
Indexing accuracy - W/O direct encoder	arc sec	R.±30" - T.±40"	R.±25" - T.±30"	R.±20" - T.±25"	-	
Indexing accuracy - direct encoder	arc sec	RCN2380/90F ± 5" (R.Table ±7") / RCN2580/90F ±2,5" (R.Table ±5")				
Repeatability	arc sec	R.±3" - T.±3"	R.±3" - T.±3"	R.±2" - T.±3"		
Clamping system	-	Hydraulic				
Clamping torque - R (rotation) T (tilting)	Nm	R.300 - T.500	R.500 - T.900	R.1.050 - T.1750	R.1250 - T.2100	R.1625 - T.3250
Clamping pressure	Bar	40	40	40	40	40
Work load - Plate horizontal	Kg	30	40	100	130	250
Work load - plate vertical	Kg ¹	20	25	50	65	175

Work load - plate vertical W/TS		30	40	100	130	250
Transmissible torque maximum speed	Nm	200 / 300	200 / 400	600 / 800	800 / 1200	1200 / 1600
Recommended motor torque	Nm	4/6	4/8	6/8	8/12	12/16
Motor speed	rpm	2000/3000				
Table rotation speed	rpm ⁴	22,22 / 33,33	22,22 / 33,33	11,11 / 16,66	11,11 / 16,66	11,11 / 16,66
Gear and pinion reduction	i	R.45/1 - T.45/1	R.45/1 - T.45/1	R.90/1 - T.90/1	R.90/1 - T.90/1	R.90/1 - T.90/1
Belt / Pulley - Gears driver / driven	i	R.2/1 - T.2/1	R.2/1 - T.2/1	R.2/1 - T.2/1	R.2/1 - T.2/1	R.2/1 - T.2/1
Total reduction ratio	i ²	90/1	90/1	180/1	180/1	180/1
Net weight (WO Motor)	Kg	75	150	185	425	600
Lubrication Oil CEPSA EP-80W90						

USA Sales, Service & Repair Contact

Rusach International

100 Raymond Street Hope, IN, USA 47246

317-638-0298 www.rusach.com sales@rusach.com

