

# The Rusach Advantages

## Metrology Systems & Products

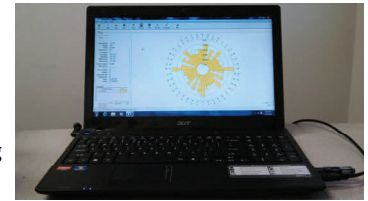
Roundness (Runout), Inspecting, Weighing, Assembly, Balancing,  
Stacking, Placing & Testing

**A System Designed for your Application!**

**CMM Tables, Inspection Tables, Assembly Tables, Tomography  
Tables, Custom Systems & Tables**



**Rusach International** can offer bench-top electronic moment weight scales in capacities from 100 to 10,000 g/mm and purpose-built scales in other capacities. Scales feature flexure bearing pivots and USB or RS-232 interfaces for direct input of weight values into the **BalancePoint** program.



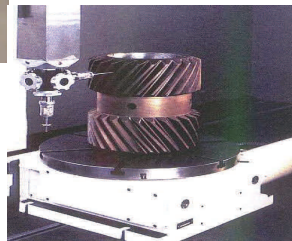
### Paragon By Turbine Metrology

#### Circular Geometric Inspection System

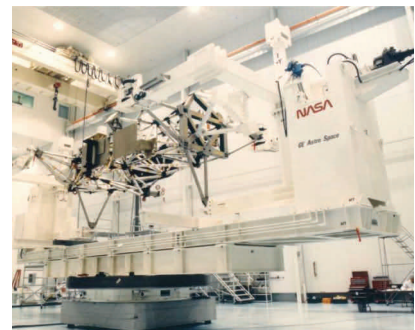
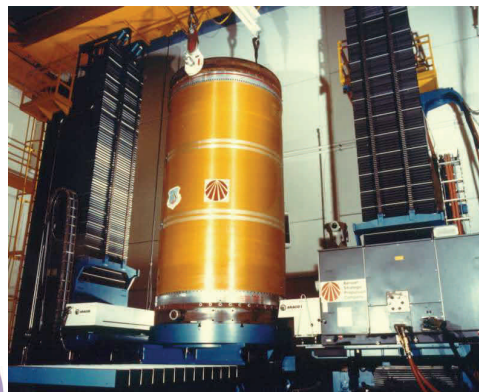


(More info on the back side)

#### Inspection/Assembly/CMM Tables



#### Tomography Tables



100 Raymond Street, Hope, IN 47246    www.rusach.com    317-638-0298

**Every Challenge Has A Solution**

# The Rusach International / Turbine Metrology

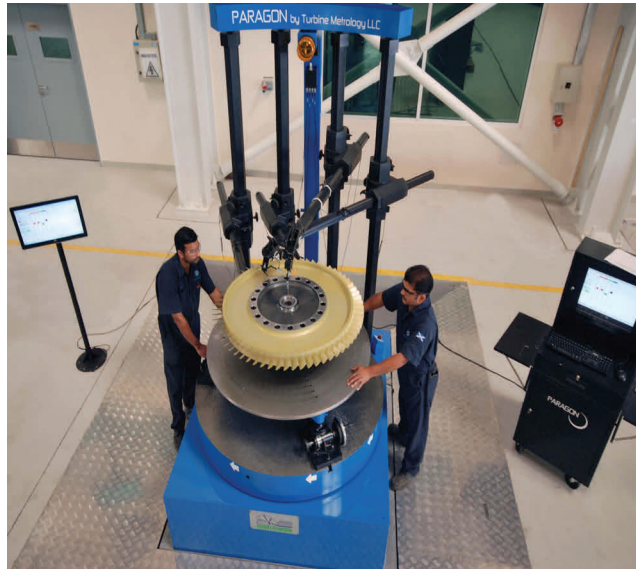
## Paragon V3.24 Circular Geometry Inspection System

### For Measuring

### Roundness, Concentricity, Runout, Flatness, Parallelism

Turbine Metrology's *Paragon* Inspection System along with Rusach International's Very Accurate *Rotary Tables* allow for the necessary measurements to be taken with a single revolution of the table. 1.2 million samples per second!

Rusach International's Air Bearing Inspection Tables can achieve accuracies of +/-1 Arc Second!



- True 24 bit analog to digital conversion
- DSP yields resolution to .125 microns
- Simultaneous sampling to avoid data skew
- 4 channels standard, 12 channels available
- Customizable for your application
- Slew Rate > 240 degrees/sec
- Supplied w/touch screen computer with 1920 x 1080 resolution
- (3) User access levels for added security



Touch screen interface, Paragon V3.0, V3.24

Paragon V3.24, the latest version of the Turbine Metrology's Circular Geometry Inspection system, incorporates a new touch-screen GUI, and additional software features to keep Paragon well ahead of the competition in terms of accuracy, reliability, ease of use, and price. Paragon V2013-24 uses new 24 bit hardware to take accuracy to a new level!

### General Information

- No mandatory software upgrades, no yearly license fees, no maintenance fees
- Paragon conforms to ISO-1101, ISO-6318 and BS-3730 standards for Circular Geometry Inspection
- Mathematical algorithms correct data for part off-centeredness and tilt on the inspection table
- Paragon makes all standard calculations to provide Roundness, Eccentricity, Run-Out, Flatness & Parallelism
- Runs on standard industrial PC based under a Windows 2000/XP/VISTA/7 operating system
- Paragon contains a complete Test Creator/Editor module so the user may write his own test routines
- Paragon measures each surface over 500,000 times to construct a much more accurate surface characterization
- Paragon systems can take hundreds of thousands of times more data than a CMM in a given amount of time. In addition, the data is automatically related to provide Roundness, Eccentricity, Run-out, Flatness and Parallelism results. CMM's are not designed to do these specialized measurements and operations.

### Automotive Applications

- Brake Rotors, Hub Assemblies, Spindles, Caliper Pistons
- Flywheels, Clutches, Differentials, CV Joints, Wheels, Drive Shafts.
- Crankshafts, Camshafts, Wristpins, Pistons, Pulleys

### Aerospace Applications

- Aircraft Engine part Run-Out
- Turbine Wheel Rotating Parts
- Optimized Rotor Stacking

### What Can We Measure For You?

100 Raymond Street, Hope, IN 47246 www.rusach.com 317-638-0298

**Every Challenge Has A Solution**

